

OPTION A FRONT STUDIO: 375 SQ. FT.

USMODULAR, INC.
 BUILDERS/DEVELOPERS
 140 E. STESON AVE. #301,
 HEMET, CA 92543
 951-679-9907
 888-987-6638
 Fax: 951-672-0926
 info@usmodularinc.com

MOD PRO ADU

REV.	BY	DATE
01	SDD	10/11/21
02	SDD	10/19/21
03	SDD	10/24/21
04	SDD	10/26/21
05	SDD	11/08/21

PROPOSED PROJECT
 ADU SERIES

OPTION A
 PLAN SHEET

DATE
 10/09/21

SCALE
 1/4" = 1'-0"

SHEET
 1
 OF 10 SHEETS

MOD PRO ADU

REV.	BY	DATE
01	SDD	10/11/21
02	SDD	10/19/21
03	SDD	10/24/21
04	SDD	10/26/21
05	SDD	11/08/21

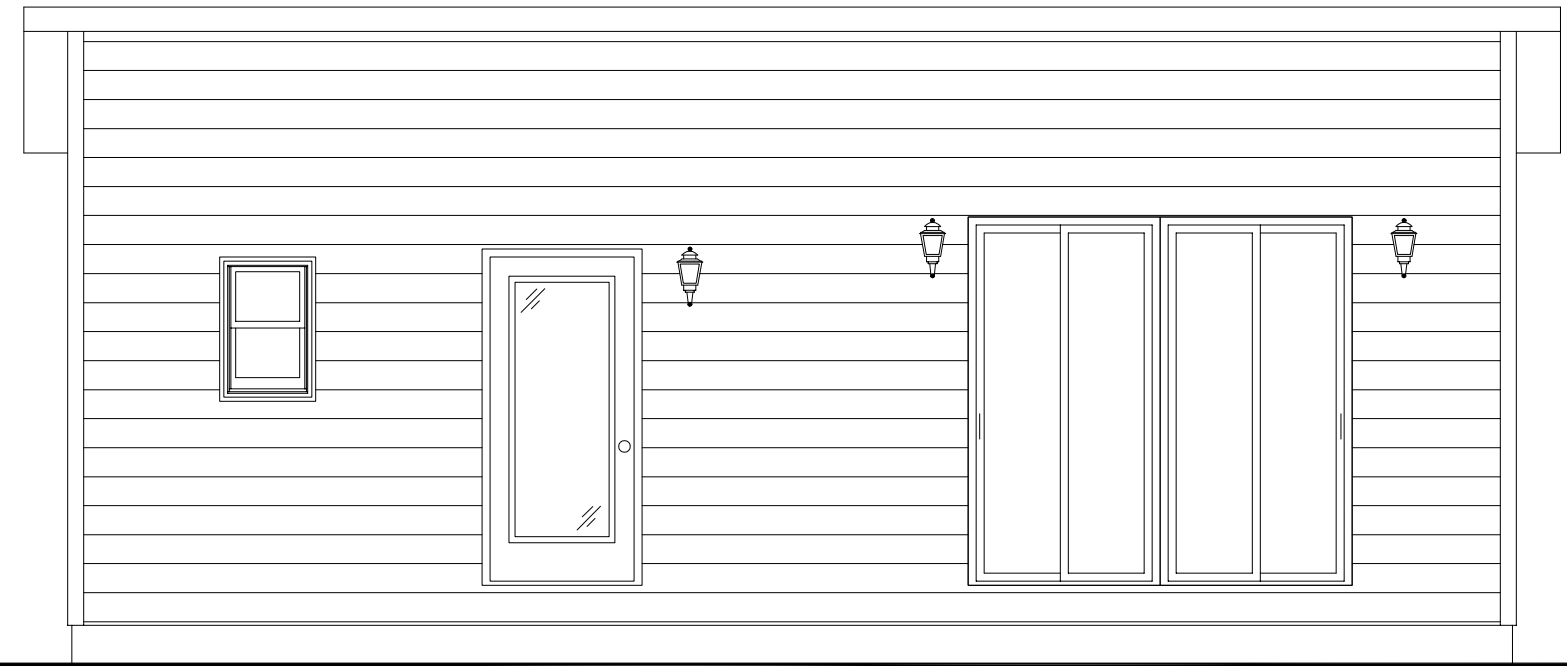
PROPOSED PROJECT
 ADU SERIES

OPTION A
 ELEVATIONS
 SHEET

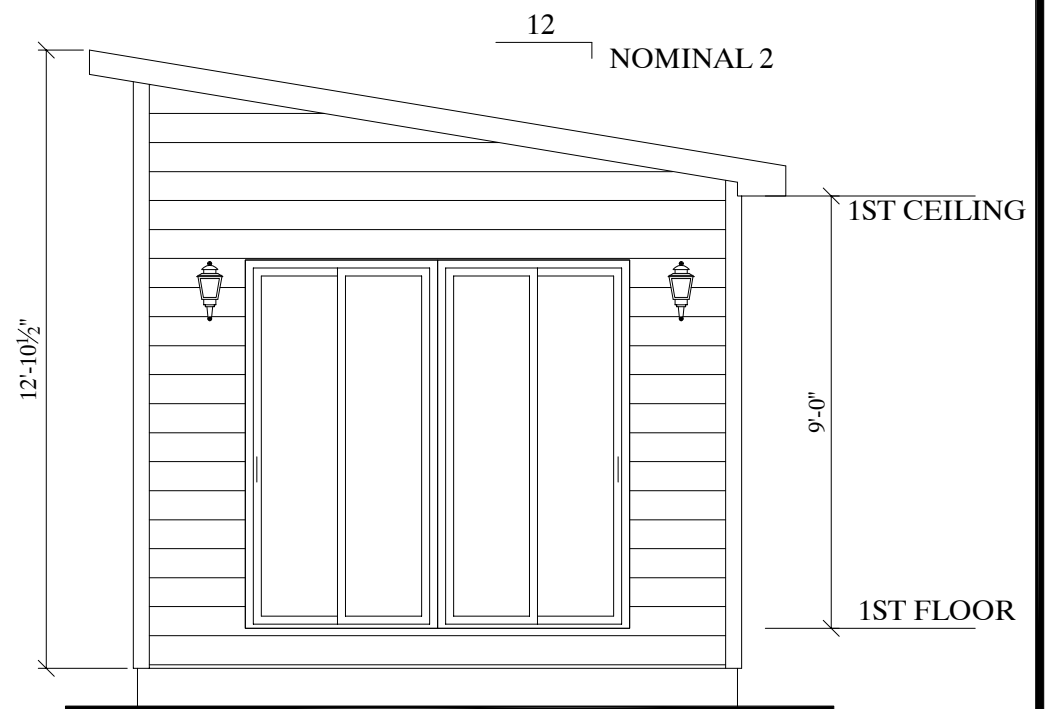
DATE
 10/09/21

SCALE
 1/4"=1'-0"

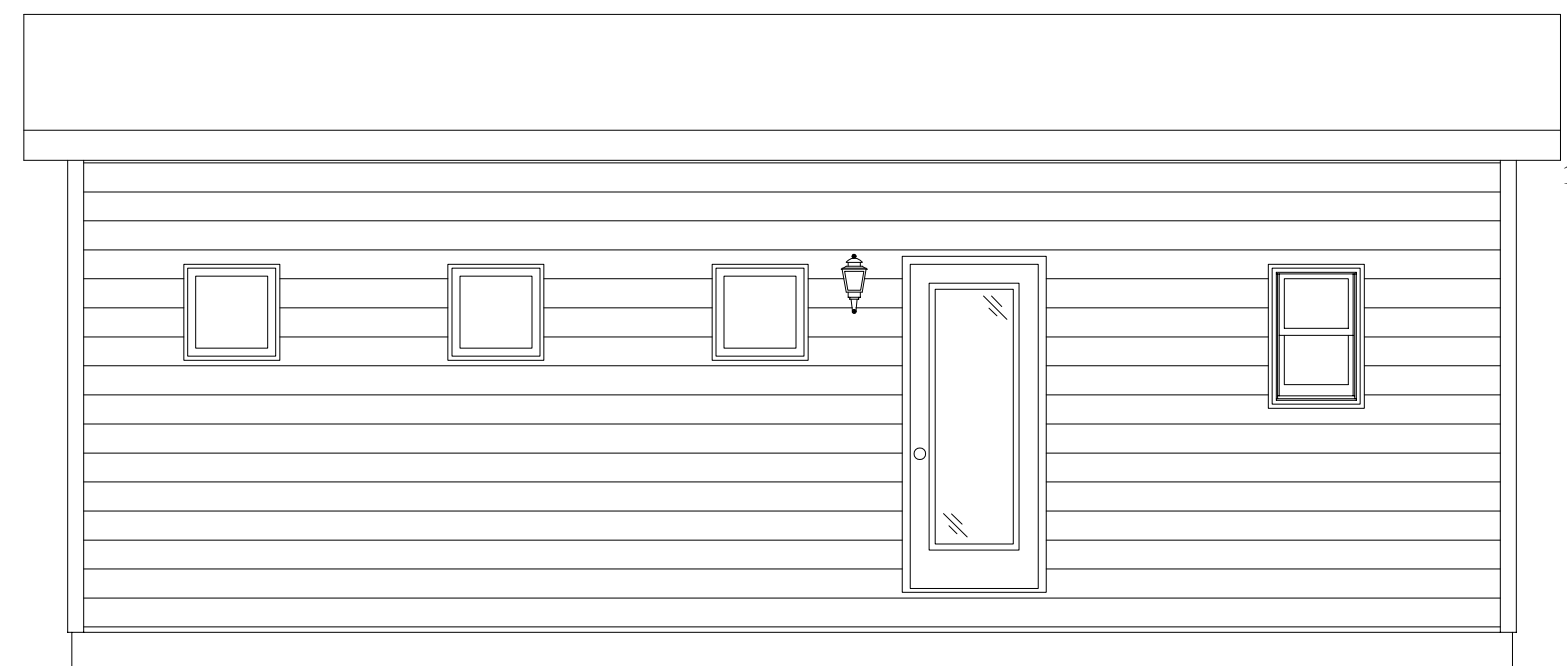
SHEET
 2
 OF 10 SHEETS



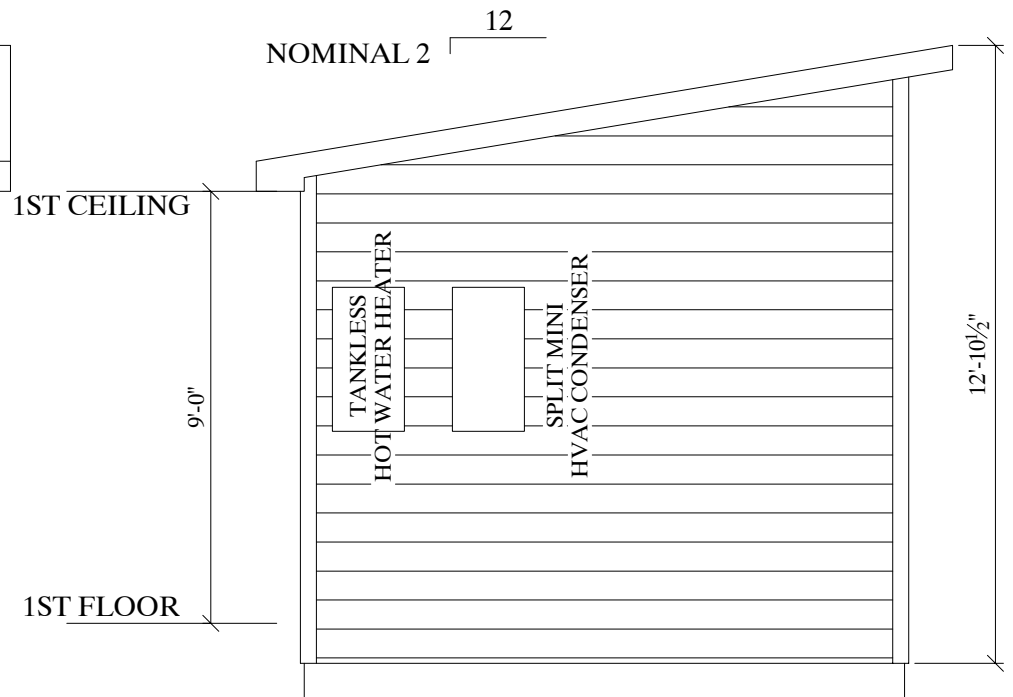
FRONT ELEVATION



RIGHT ELEVATION



REAR ELEVATION



LEFT ELEVATION



BUILDERS/DEVELOPERS
 140 E. STESON AVE. #301,
 HEMET, CA 92543
 951-679-9907
 888-987-6638
 Fax: 951-672-0926
 info@usmodularinc.com

MOD PRO ADU

REV.	BY	DATE
01	SDD	10/11/21
02	SDD	10/19/21
03	SDD	10/24/21
04	SDD	10/26/21
05	SDD	11/08/21

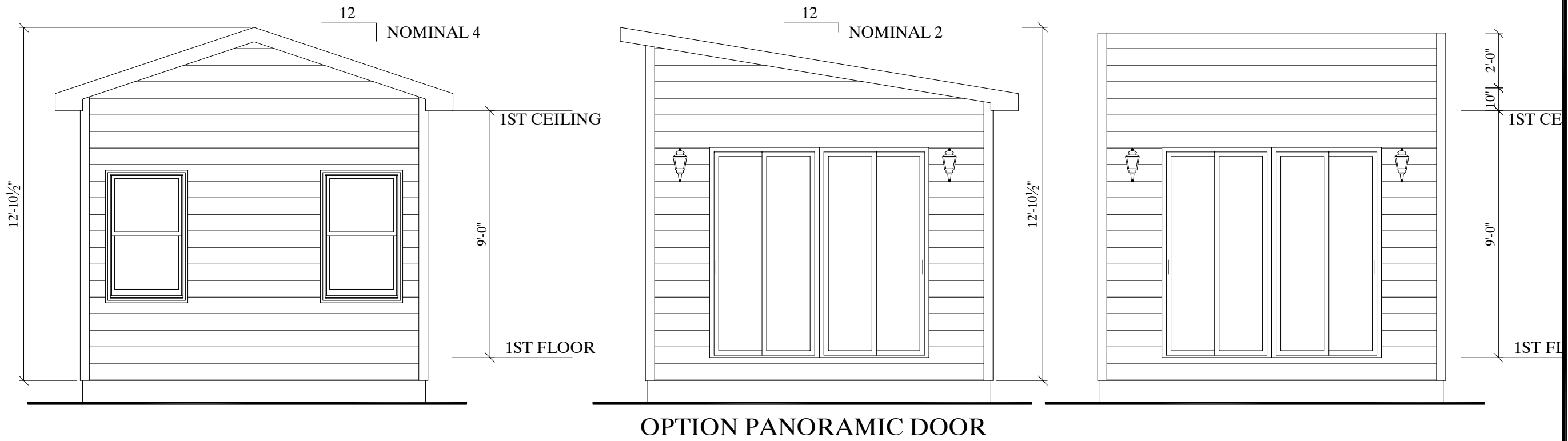
PROPOSED PROJECT
 ADU SERIES

OPTION A
 ELEVATIONS
 SHEET

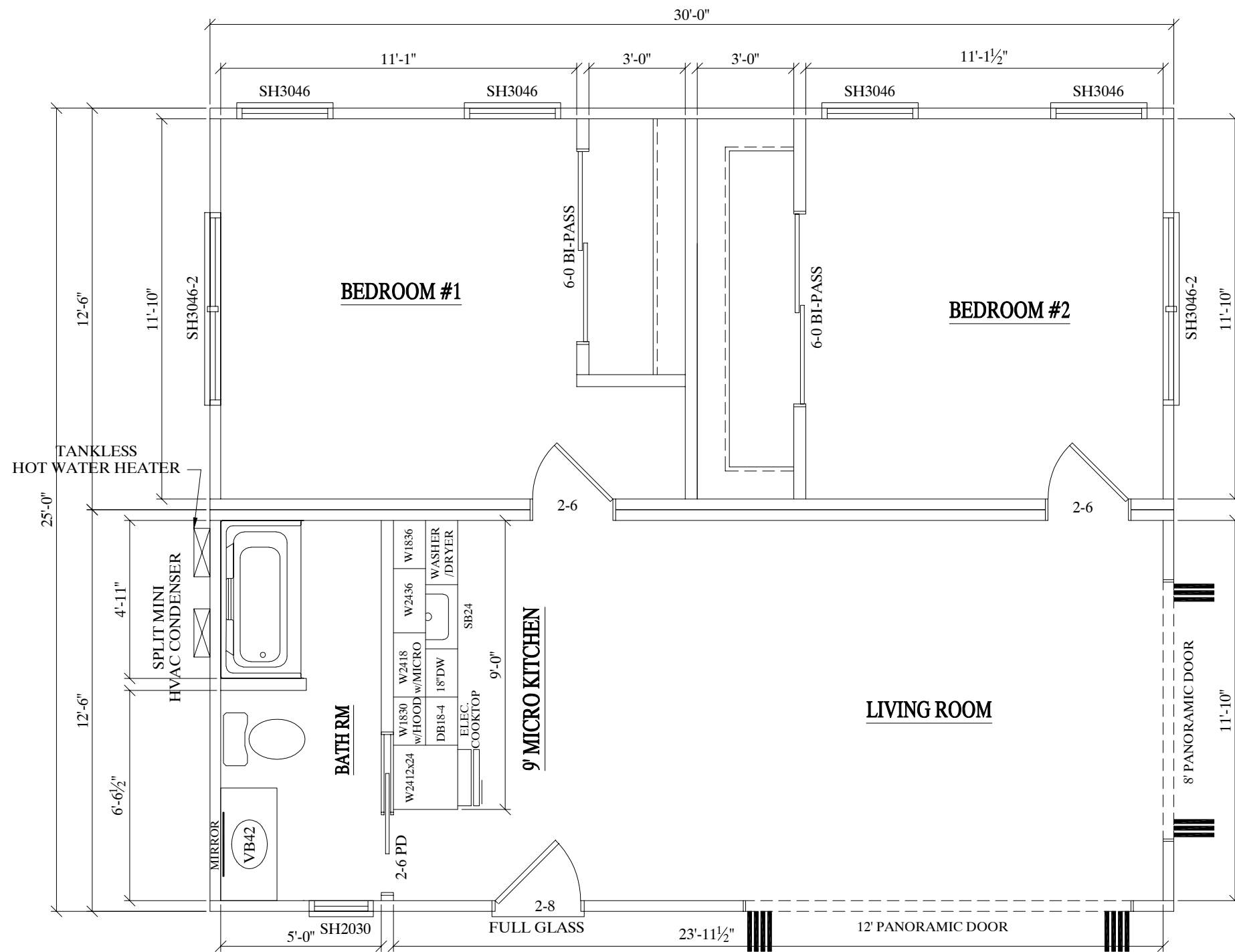
DATE
 10/09/21

SCALE
 1/4" = 1'-0"

SHEET
 3
 OF 10 SHEETS



OPTION#A ROOF OPTIONS



OPTION B FRONT
2 BEDROOMS + 1 BATH: 750 SQ. FT.

RIGHT

USMODULAR, INC.
 BUILDERS/DEVELOPERS
 140 E. STESON AVE. #301,
 HEMET, CA 92543
 951-679-9907
 888-987-6638
 Fax: 951-672-0926
 info@usmodularinc.com

MOD PRO ADU	---	---	---
-------------	-----	-----	-----

REV.	BY	DATE
01	SDD	10/11/21
02	SDD	10/19/21
03	SDD	10/24/21
04	SDD	10/26/21
05	SDD	11/08/21

PROPOSED PROJECT	ADU SERIES

OPTION B
 PLAN SHEET

DATE
 10/09/21

SCALE
 1/4" = 1'-0"

SHEET
 4
 OF 10 SHEETS

MOD PRO ADU

REV.	BY	DATE
01	SDD	10/11/21
02	SDD	10/19/21
03	SDD	10/24/21
04	SDD	10/26/21
05	SDD	11/08/21

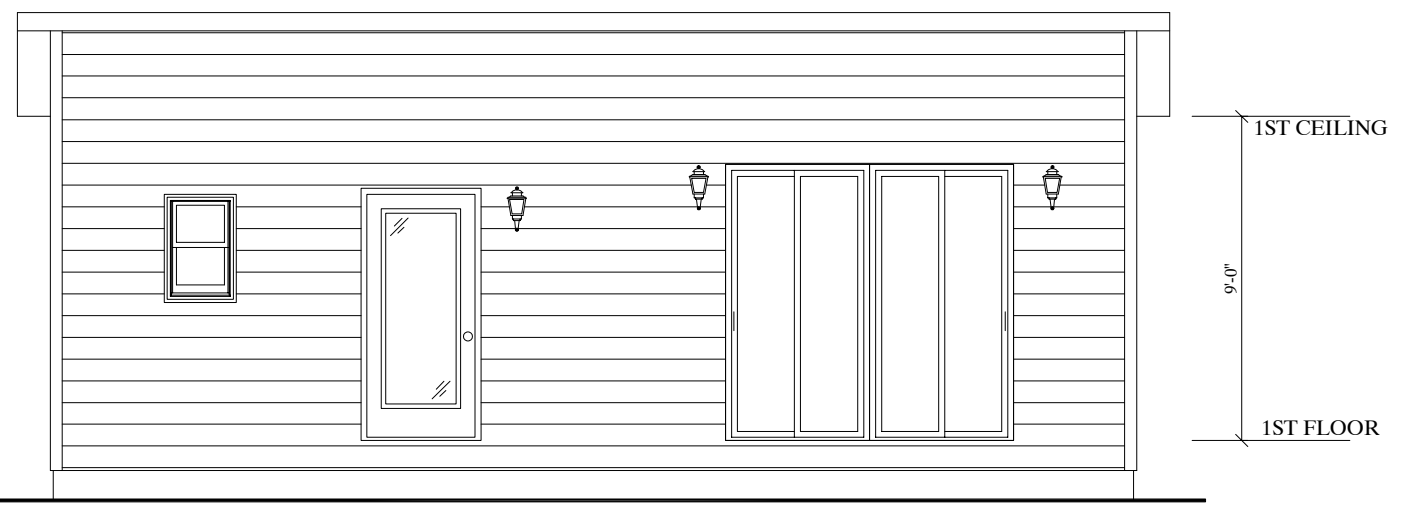
PROPOSED PROJECT
 ADU SERIES

OPTION B
 ELEVATIONS
 SHEET

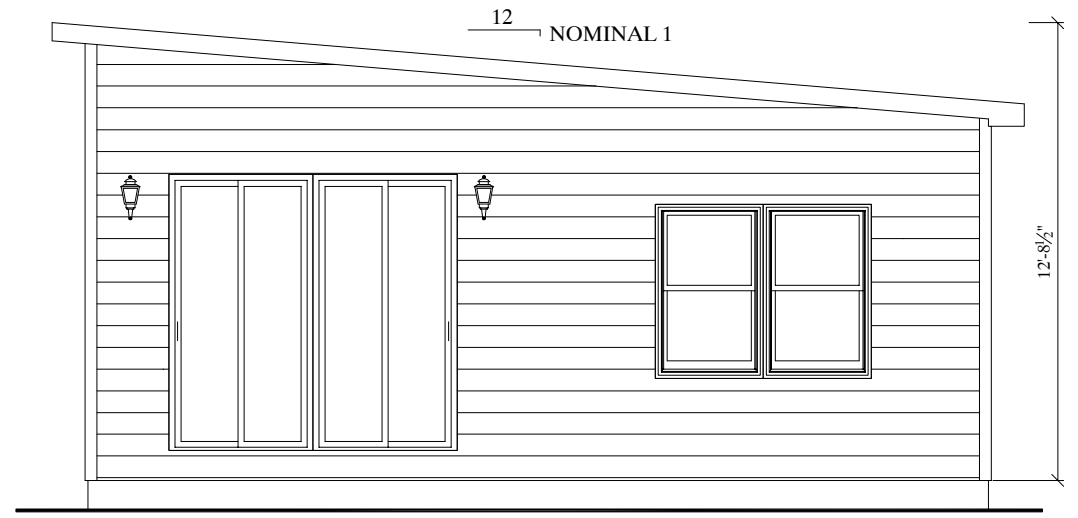
DATE
 10/09/21

SCALE
 1/4" = 1'-0"

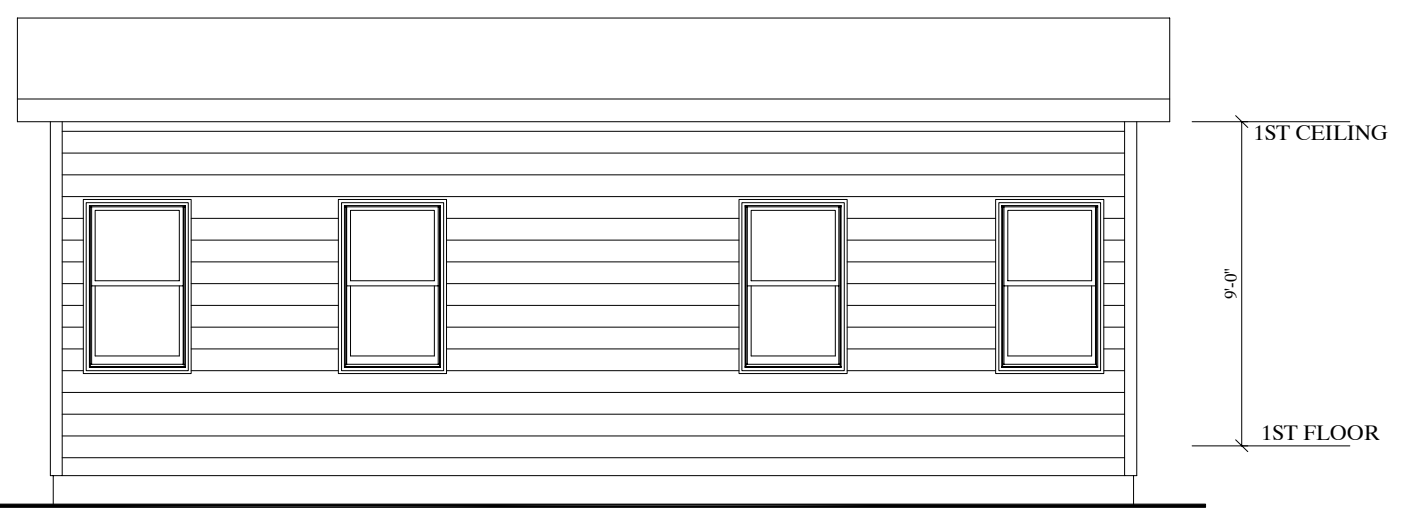
SHEET
 5
 OF 10 SHEETS



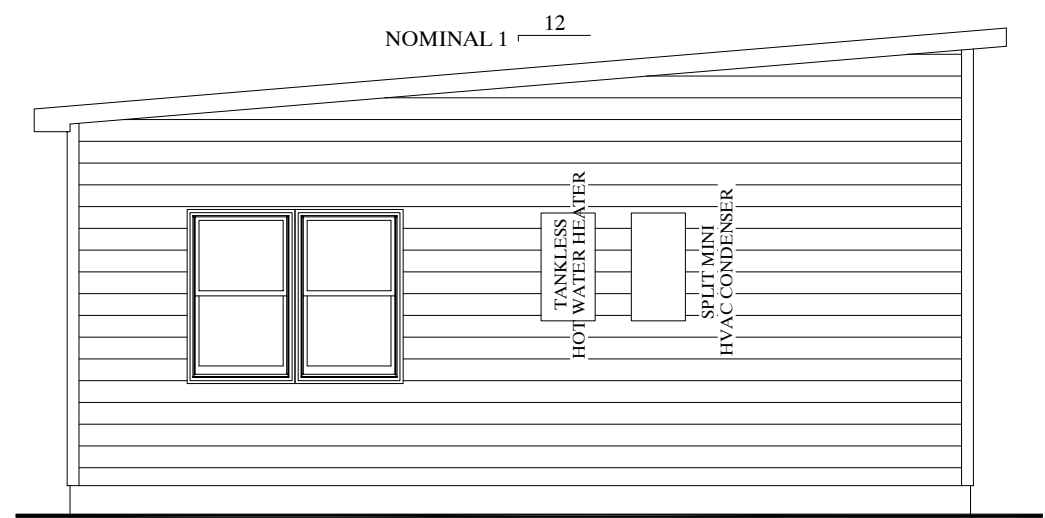
FRONT ELEVATION



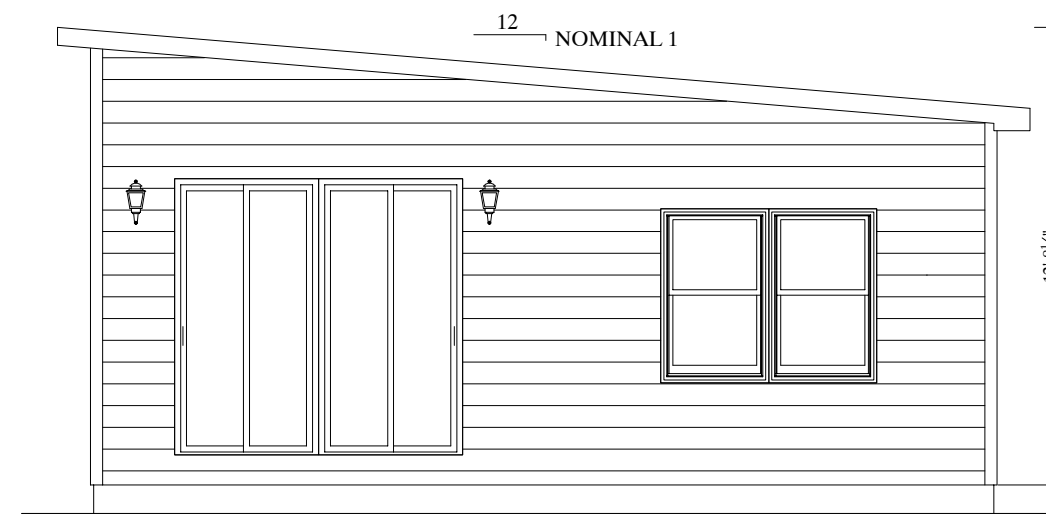
RIGHT ELEVATION



REAR ELEVATION

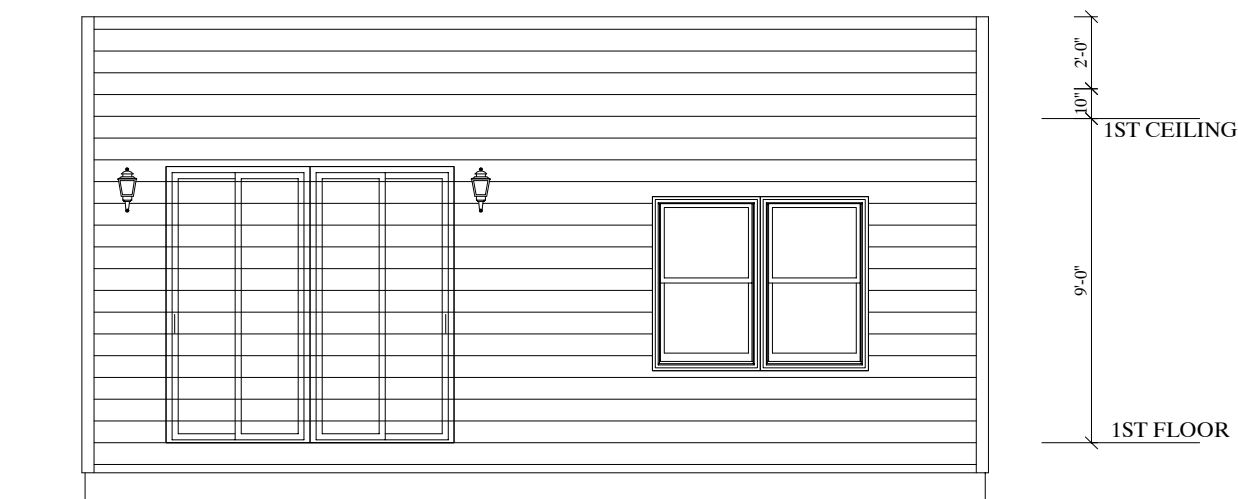


LEFT ELEVATION



OPTION PANORAMIC DOOR

OPTION#B ROOF OPTIONS



MOD PRO ADU

REV.	BY	DATE
01	SDD	10/11/21
02	SDD	10/19/21
03	SDD	10/24/21
04	SDD	10/26/21
05	SDD	11/08/21

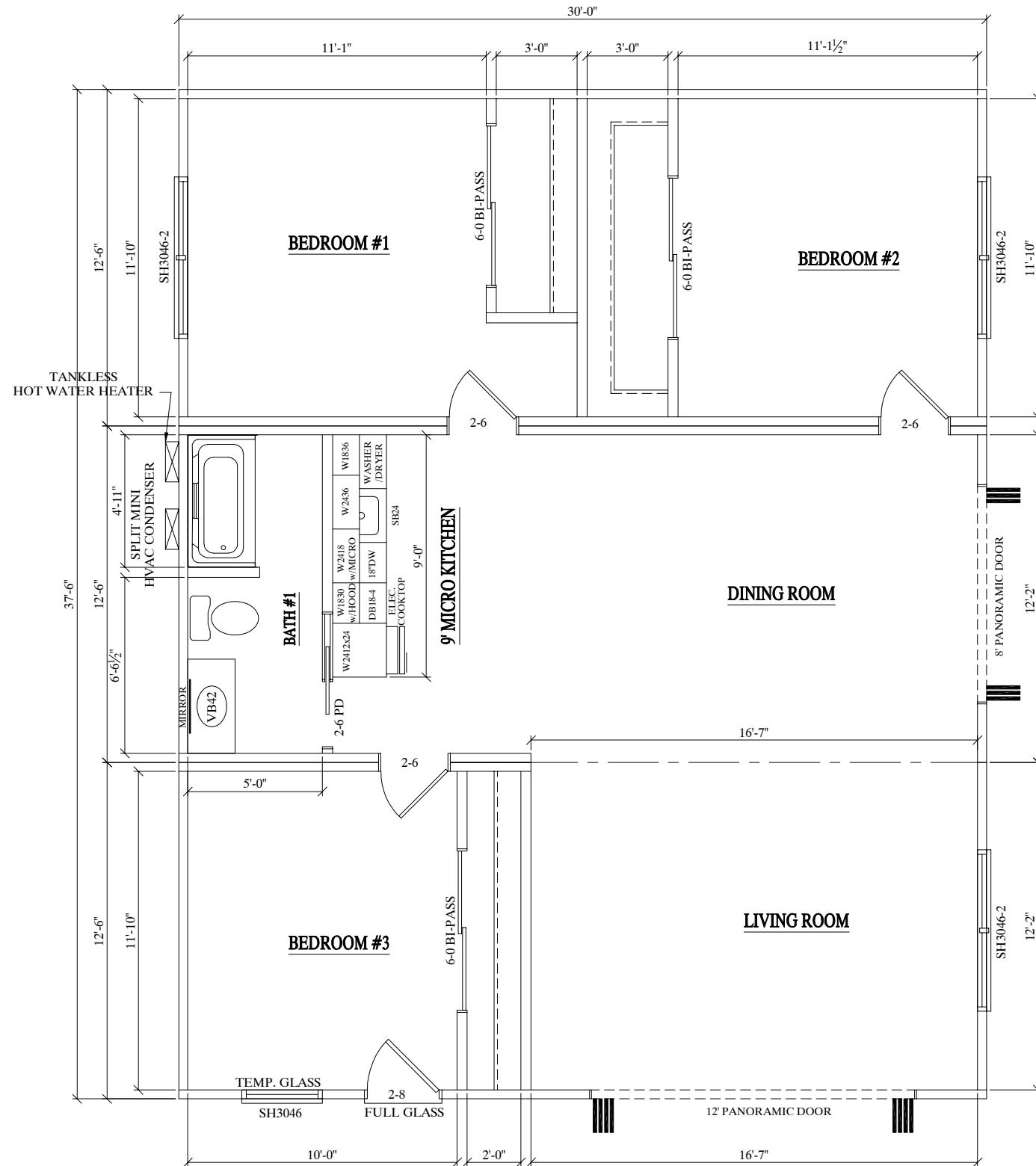
PROPOSED PROJECT
 ADU SERIES

OPTION B
 ELEVATIONS
 SHEET

DATE
 10/09/21

SCALE
 1/4" = 1'-0"

SHEET
 6
 OF 10 SHEETS



OPTION C FRONT
3 BEDROOMS + 2 BATHS: 1,125 SQ. FT.

RIGHT



BUILDERS/DEVELOPERS
 140 E. STESON AVE. #301,
 HEMET, CA 92543
 951-679-9907
 888-987-6638
 Fax: 951-672-0926
 info@usmodularinc.com

MOD PRO ADU

REV.	BY	DATE
01	SDD	10/11/21
02	SDD	10/19/21
03	SDD	10/24/21
04	SDD	10/26/21
05	SDD	11/08/21

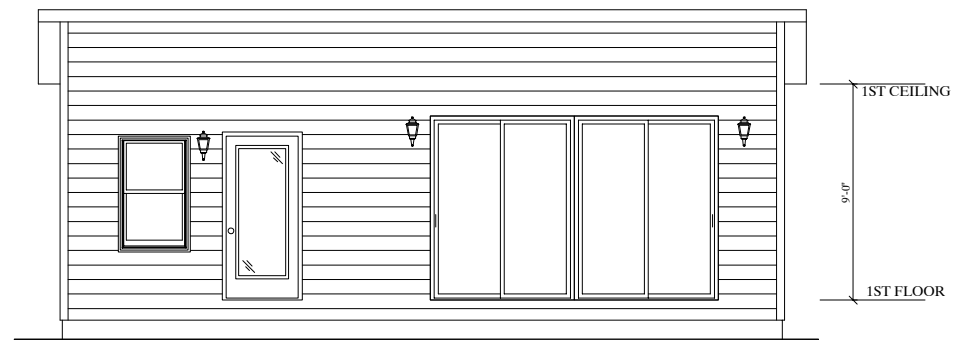
PROPOSED PROJECT
 ADU SERIES

OPTION C
PLAN
SHEET

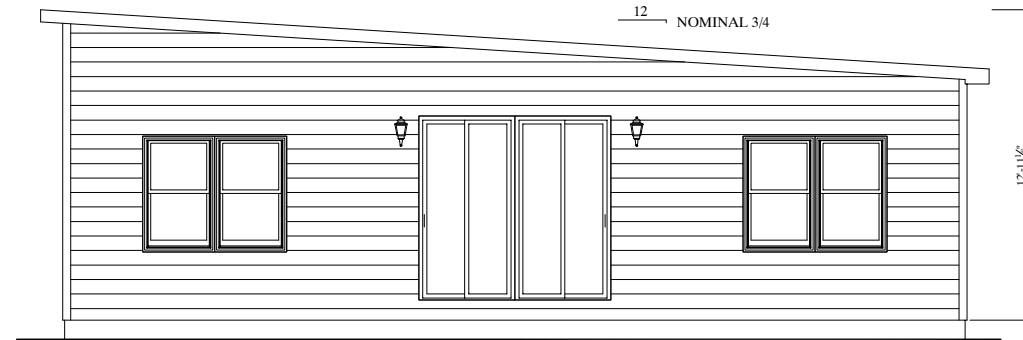
DATE
 10/09/21

SCALE
 1/4" = 1'-0"

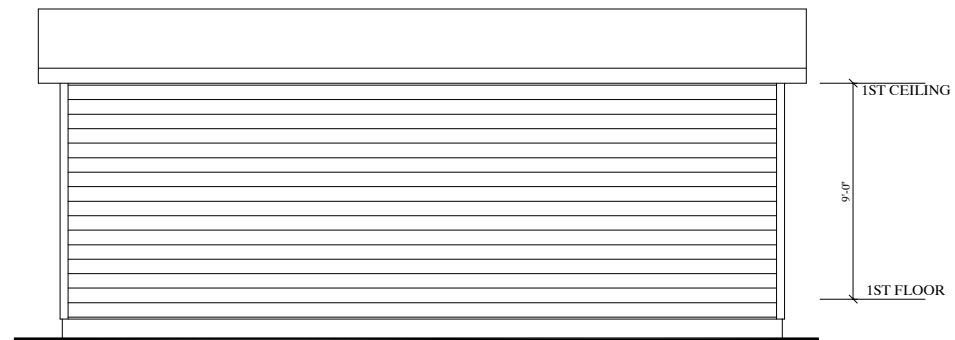
SHEET
 7
 OF 10 SHEETS



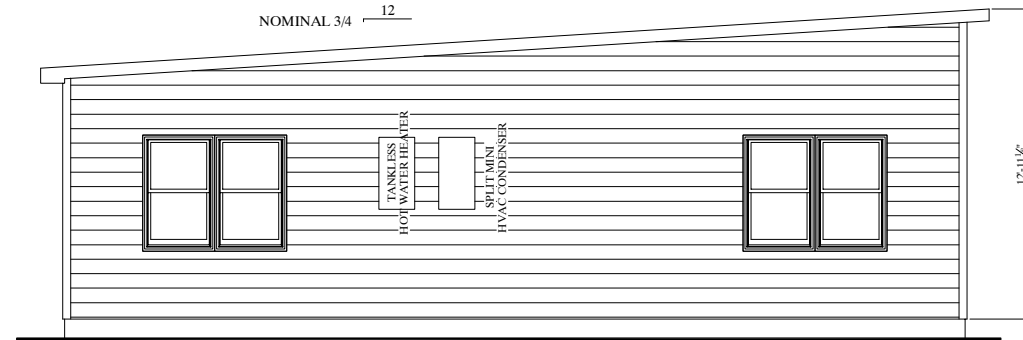
FRONT ELEVATION



RIGHT ELEVATION



REAR ELEVATION



LEFT ELEVATION



USMODULAR, INC.
 BUILDERS/DEVELOPERS
 140 E. STESON AVE. #301,
 HEMET, CA 92543
 951-679-9907
 888-987-6638
 Fax: 951-672-0926
 info@usmodularinc.com

MOD PRO ADU

REV.	BY	DATE
01	SDD	10/11/21
02	SDD	10/19/21
03	SDD	10/24/21
04	SDD	10/26/21
05	SDD	11/08/21

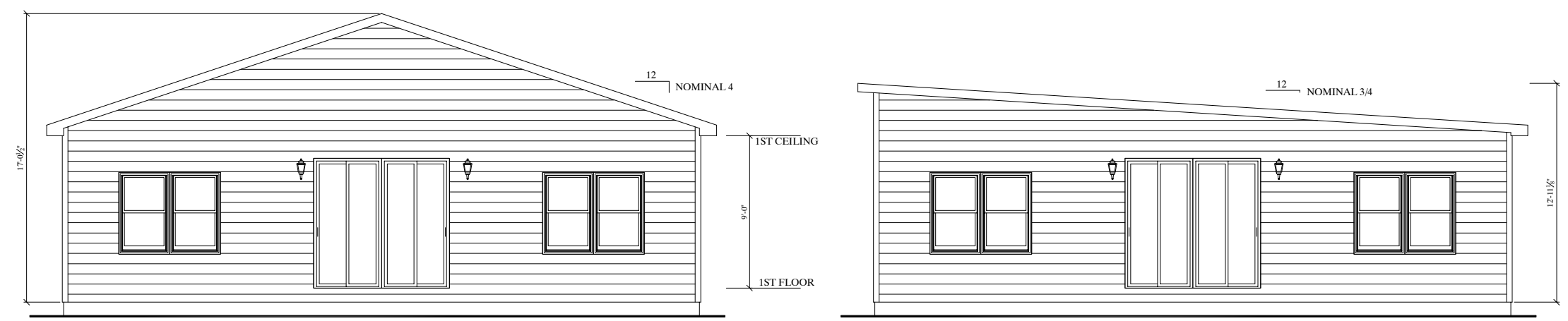
PROPOSED PROJECT
 ADU SERIES

OPTION C
 ELEVATIONS
 SHEET

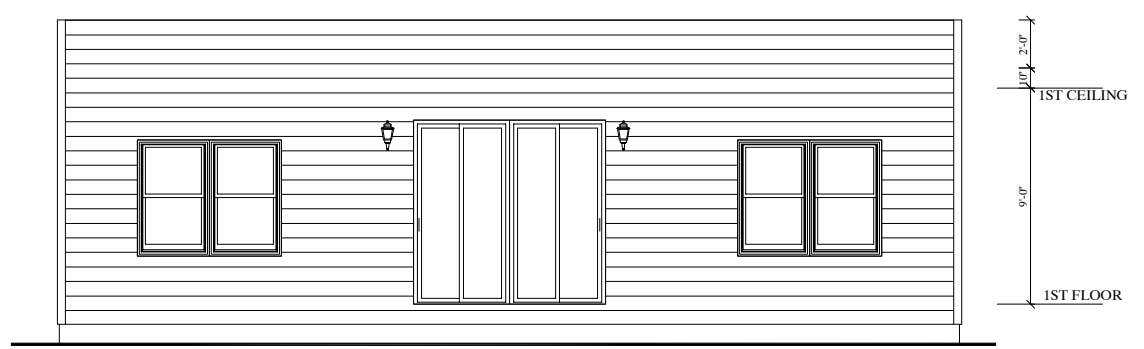
DATE
 10/09/21

SCALE
 1/4" = 1'-0"

SHEET
 8
 OF 10 SHEETS



OPTION#C ROOF OPTIONS



MOD PRO ADU

REV.	BY	DATE
01	SDD	10/11/21
02	SDD	10/19/21
03	SDD	10/24/21
04	SDD	10/26/21
05	SDD	11/08/21

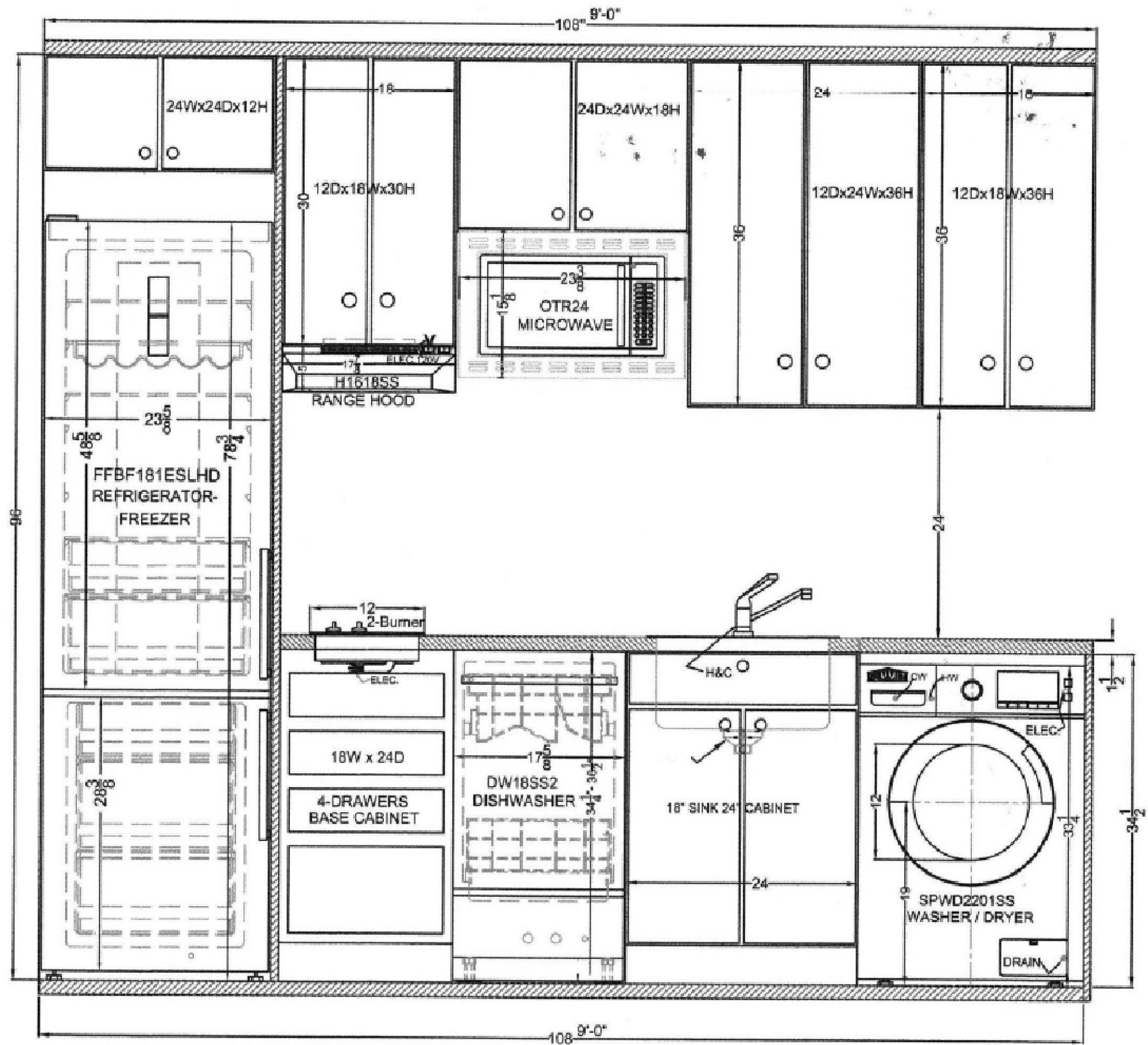
PROPOSED PROJECT
 ADU SERIES

OPTION C
 ELEVATIONS
 SHEET

DATE
 10/09/21

SCALE
 1/4"=1'-0"

SHEET
 9
 OF 10 SHEETS



USMODULAR, INC.
 BUILDERS/DEVELOPERS
 140 E. STESON AVE. #301,
 HEMET, CA 92543
 951-679-9907
 888-987-6638
 Fax: 951-672-0926
 info@usmodularinc.com

MOD PRO ADU

REV.	BY	DATE
01	SDD	10/11/21
02	SDD	10/19/21
03	SDD	10/24/21
04	SDD	10/26/21
05	SDD	11/08/21

PROPOSED PROJECT
 ADU SERIES

9' KITCHEN
 ELEVATION
 SHEET

DATE
 10/09/21

SCALE
 1/4" = 1'-0"

SHEET
 10
 OF 10 SHEETS