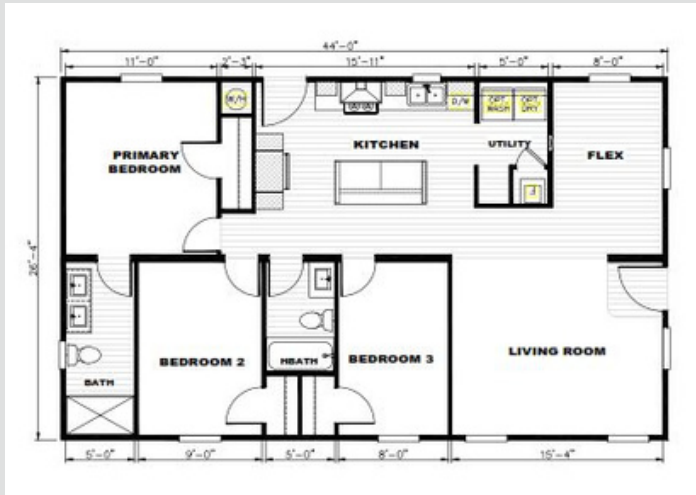
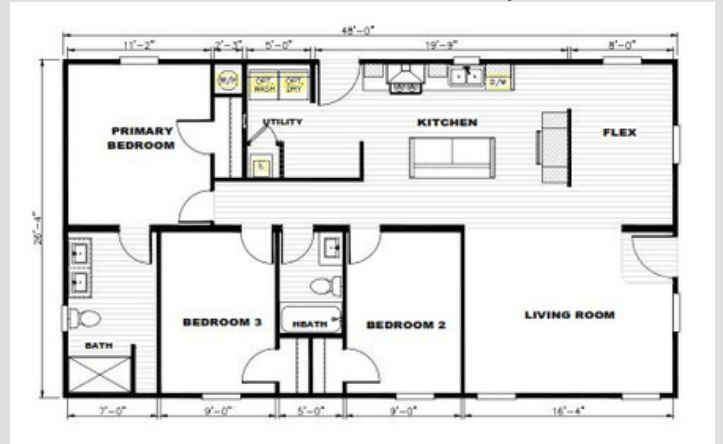


Tempo



W/ Alternate Utility Room



Abbey Road

3 Bed 2 Bath

1,232 Sqft

26'4" x 44'

2 Sections

Note:

- Lender requirements may require changes to designs, these changes may require additional project costs.
- Prices, Specifications, & Material are Subject to change without notice
- SQUARE FOOTAGE AND DIMENSIONS ARE APPROXIMATE



info@usmodularinc.com

951-679-9907 ext. 1

Full Service General Contractor
CA HCD Dealer License #DL1241679
CA General Contractors License #943047

Tempo Series Specifications

Flooring

- 16" On Center- Joist Spacing
- 4'x8'x19/32" OSB / T&G - Decking
- r-22 Batt / Blanket- Insulation

Roof

- Truss Load- 30 Live Load
- Opt- Truss Load- 40 live load
- Roof Pitch 3/12
- Insulation-r-33 Blown
- Ceiling Finish Interior-Tape & Texture/ Delicate white
- Sidewall-8"
- Endwall Overhand- 12"
- Shingles 25 years - 3 Tab

Exterior

- Wall Height- 96" Flat
- Wall Thickness 2" x 4"
- Stud Spacing-16" on Center
- Insulation R-11 Batt
- Siding-Smart Panel
- Dormer-16' Dormer
- Exterior Package-2 color Combination
- Windows- White Dual Glaze
- Front Door- Craftsman w/ Window - White
- Front Door Hardware- Kwikset /Thumbblatch / Black
- Front Door Lighting- Wall Lantern/ Black
- Rear Door Hardware Kwikset/Egg Knob/ Nickel
- Rear Door Lighting-Wall Sconce / Black

Interior

- Door-2Panel Arch
- Door Hardward-Kwikset / Egg Knob / Nickel
- Wall Covering- Tape & Texture
- Baseboard Trim-Craftsman 3"
- Window & Door Trim-Craftsman 3"
- Hard Floorig- Congoleum /Lux/per floorplan
- Carpet- Shaw / New Wave
- Carpet Pad- Rebond /5#/
- Lighting- LED Can Lighting
- Decor Shelving- Cratsman
- Closet Shelvig- Wire/ White

Cabinetry

- Cabinet Doors/Frames- DuraCraft/Shaker Style
- Overhead Cabinets- 42" OH / Drilled & Clipped Adj Shelf
- Hardware- Black Knob
- Base Cabinets- Fixed Shekf/ No Back
- Drawers- Drawer Bank Kitchen

Climate

- Energy Star - Energy Star Ready
- Furnace/ Electric- Carrier Smart Comfort
- Water Heater / Electric - Rheem Electric
- Entrance Panel- 200 Amp/ Total Electric
- Thermostat- Eco Smart

Bath

- Primary Bath Shower- Shower / Fiberglass 1 pc / no door
- Addtl Bath Tub/ Shower-tub-shower Combo/Fiber glass 1 PC
- Faucets-Pfsiter / Single Level/ Nicker
- Counter tops-Formica Laminate- 1 color
- Backsplash-Formica Laminate/ 1 Color
- Lighting- LED Can Lights

Kitchen

- Kitchen Cabinet Color- Bishop Oak
- Refrigerator-Frigidair / Stainless
- Range/Electric- Fridgidair/ Stainless
- Range Hood-European Stainless Hood
- Dishwasher- Frigidair - Stainless
- Sink- Stainless Steel
- Sink Faucet- Pfister / Gooseneck Pull Out/ Nickel
- Counter Tops- Formica Laminate-1 color
- Island Tops-Formica Laminate-1 color
- Backsplash- Formica Laminate-1 color
- Lighting-L:ED Can Lights

US Modular // HUD Specifications
CA HCD Dealer License #DL1241679
CA General Contractors License #943047

