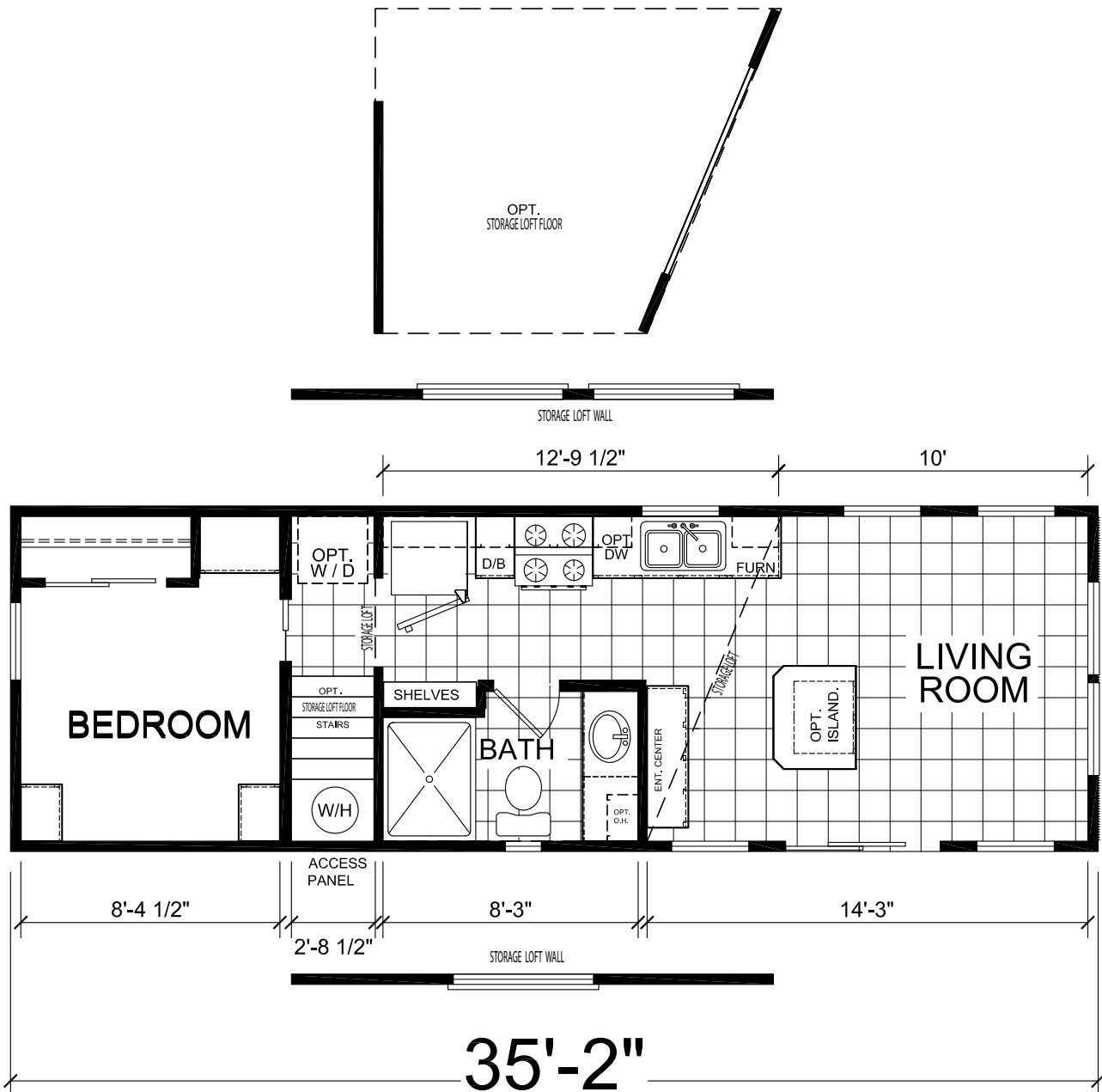


11'-2"



OPT. STORAGE LOFT FLOOR

OPT. BOX BAY

STORAGE LOFT WALL

12'-9 1/2"

10'

OPT. W/D

D/B

OPT. DW

FURN.

BEDROOM

OPT. STORAGE LOFT FLOOR STAIRS

SHELVES

BATH

ENT. CENTER

OPT. ISLAND.

LIVING ROOM

W/H

ACCESS PANEL

OPT. C.H.

8'-4 1/2"

8'-3"

14'-3"

2'-8 1/2"

STORAGE LOFT WALL

35'-2"

ALL DRAWINGS AND DIMENSIONS ARE APPROXIMATE, AND MAY BE SUBJECT TO CHANGES BY CHAMPION HOME BUILDERS CO. LINDSAY, CA

REDMAN HOMES.
CHAMPION
 840 W. Palm Ave. Lindsay, CA 93247

DAPIA SEAL

MODIFICATIONS			

PROPRIETARY AND CONFIDENTIAL
 THESE DRAWINGS AND SPECIFICATIONS ARE ORIGINAL.
 PROPRIETARY AND CONFIDENTIAL MATERIALS OF CHAMPION.
 COPYRIGHT © 1976-2006 BY CHAMPION

MODEL: APS-503	
TITLE: LITERATURE PLAN	
DRAWN BY: J. SERPAS	DATE: 2/18/15
SCALE: 3/16" = 1'-0"	APPLICABLE MODEL # 09-000

SHEET:	L-101
1 BEDROOM, 1BATH SIZE: 11'-2" x 35'-2" TOTAL AREA: 399 SQ. FT.	

Athens Park Series

Effective Date: 2/14/22



Standard Specifications

CONSTRUCTION

Vaulted Ceiling Throughout
12" Eaves Front & Rear
Nominal Eaves Both Sides
30# Roof Load
2x4 Exterior walls
2x6 Floor Joists 16" On Center
6/12 Roof Pitch on 11'2" and 4/12 on 13'4"
5/8" Tongue & Groove Floor Decking
R-22 Ceiling Insulation
R-13 Wall Insulation
R-11 Floor Insulation

EXTERIOR

Sliding Glass Entry Door
Deluxe Porch Light
Class A Shingles
Cemplank Vertical Siding
Cemplank Fascia
Cemplank Perforated Soffit
Low "E" Dual Glaze Windows Throughout
4" Cemplank Window Trim Throughout

KITCHEN

Bank of Drawers
Granite Counters With Single Eased Edge
4" Granite Backsplash
Lined Overhead Kitchen Cabs
Brushed Nickel Single Lever Kitchen Faucet
Cabinet Over Refrigerator
Stainless Steel Sink
MTN Delight MDF Cab Doors

INTERIOR

T&T Throughout With Rounded Corners
White 2-1/4" Door Case Molding
Rocker Light Switches Throughout
3" Baseboard Molding Throughout
Wood Rod & Shelf Throughout
16 oz Shaw Carpet
#6 Rebond Carpet Pad
Finish Off Under Base Cabinets T/O
Mirrored Closet Doors in Bedroom
Night Stand & Dresser - 1 Bedroom Units Only

APPLIANCES

Deluxe Gas Range
18 CF Frost Free Refrigerator
30" Vented Range Hood With Light

PLUMBING/HEATING/ELECTRICAL/UTILITY

Gas Forced Air Furnace
Toe Kick Heat Registers Throughout
Shutoff Valves Throughout
50 AMP Service With 25' Power Cord
20 Gal Electric Water Heater
Exterior GFI Receptacle
Carbon Monoxide & Smoke Detectors
Fire Extinguisher

BATHS

Brushed Nickel Faucets & Hardware
Granite Counters With Single Eased Edge
36" or 48" Shower With Glass Enclosure
4" Granite Backsplash

BASE PRICE DOES NOT INCLUDE FREIGHT, FLAG CAR OR PERMITS



Due to our philosophy of continuous improvement, we reserve the right to change pricing and specifications without notice and/or obligation.