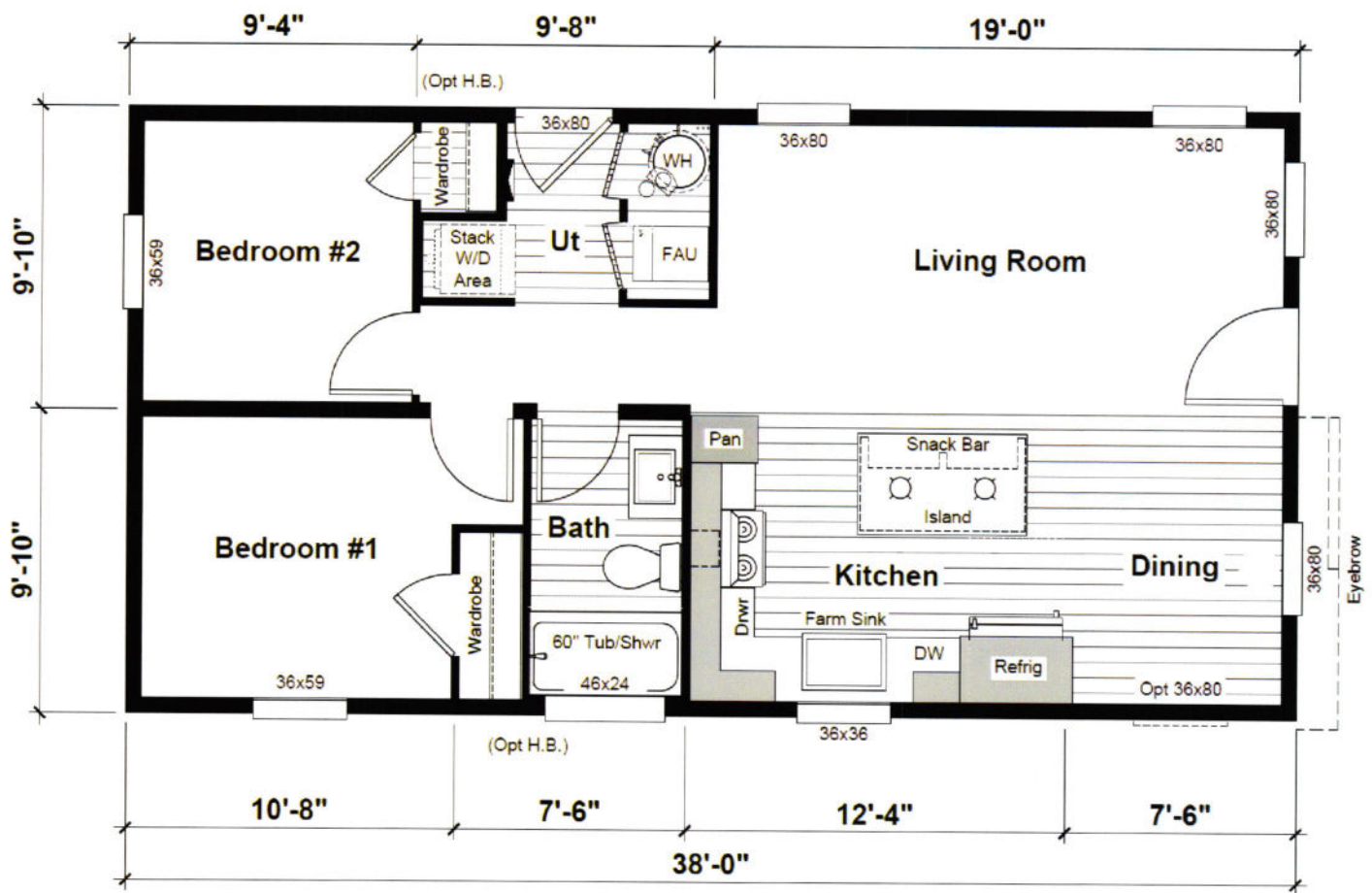


HARMONY

Blondie

HR-2038-2A | 748 Sq Ft | 2 Bed | 1 Bath



eBuilt Ask me about Zero Energy Ready™ Homes

Scan to learn more about eBuilt™

Contact your local Harmony retailer:

The home series, floor plans, photos, renderings, specifications, features, pricing, materials and availability shown will vary by retailer and state, and are subject to change without notice.



Harmony Standard Specifications

July 2023

- 9' Flat Ceilings
Featuring 80" Windows Per Plan
- LED Recessed Can Lights Throughout
- Ceiling Fan Prep in Living Areas & Bedrooms
- Upgraded Shaw® Carpet
- Kwikset® Door Hardware Throughout
Featuring Thumbatch Front Door
- Frigidaire® Black Stainless Steel Appliance Package
- Hardwood Cabinets & Frames
Featuring 42" Overheads & Drawer over Door Construction
- Full Tile Kitchen Backsplash
(Six3 Tile at Buckeye, AZ HBF)
(Ceramic Tile at Perris, CA HBF)
- Farmhouse Stainless Steel Kitchen Sink
- Pfister® Faucets Throughout
Featuring Chrome Spring Load Pull Down Kitchen & Matte Black Exclusive in Baths
- Quartz Island Countertop
(Optional throughout at Perris, CA HBF only)
- Decorative Farmhouse Pendant Lighting Over Island
- Upgraded Primary Bath with Solid Surface Shower
Featuring Glass Shower Barn Door
- Featuring unique exteriors per plan
- Craftsman Style Front Door
- 9-Lite Rear Door
- Ring® Video Doorbell
- 2x6 Exterior Walls & R-19 Insulation
- Architectural 3 Tab Shingles – 2 colors
- 30 LB Roof Load (Option 40 & 60 lb)
- eBuilt™ Zero Energy Ready Homes™ (R-27 floor, R-21 wall, R38 roof)
(Non eBuilt Homes may lower values)
- Carrier® Smart Comfort Furnace System
- ecobee® Smart Thermostat