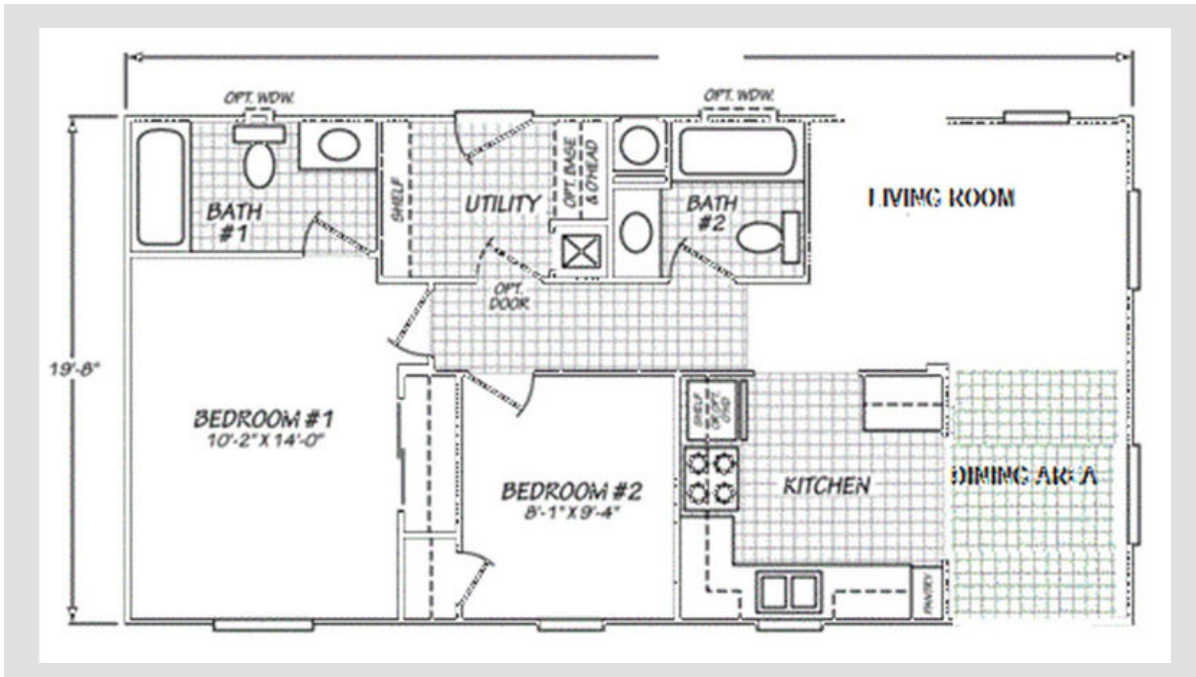


# Colonial Series



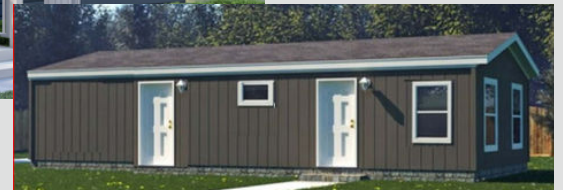
## Arlington

2 Bed 2 Bath

750 Sqft

19'8" x 38'

2 Sections



**Note:**

- Lender requirements may require changes to designs, these changes may require additional project costs.
- Prices, Specifications, & Material are Subject to change without notice
- SQUARE FOOTAGE AND DIMENSIONS ARE APPROXIMATE

20442L-Modified



info@usmodularinc.com

951-679-9907 ext. 1

Full Service General Contractor  
CA HCD Dealer License #DL1241679  
CA General Contractors License #943047

# Colonial Series Specifications

## Electrical/Plumbing

- 100 Amp Service
- Rocker Switches Throughout
- Dual USB Recept-Kitchen
- Interior Panel Box
- Furnace:56 BTU
- 29 Gal Gas Water Heater
- Shut-Off Valves Throuout
- Plumb & Wlre for washer & gas dryer

### Canyon Lake Lighting PKG

- 1-LT Domed Chandelier-Qty. 1
- Exterior Light - Qty. 2
- (5) 6' Ceiling Light (Brushed Nickel)
- Kitchen (2), Hallway(1), Master Bath (1), Guest Bath (1)

## Cabinetry

- 4" Laminate B/Splash- Master Bath
- 4" Laminate B/Splash- Guest Bath
- 4" Laminate B/ Splash- Kitchen
- Kitchen 3-Door Pantry (Model Specific)
- Cabinet Doors: Shaker (paper Wrap)
- Drawer Bank (3 Drawers)-Kitchen'  
12" Shelf Over Refer
- Cabinet Hardwar- Nickel Round Knobs
- Side-Mount Drawer Guides
- Concealed Cabinet Door Hinges
- White-Lined Overhead Cabinets
- White Lined Base Cabinets
- Wire Utility Shelf

## Kitchen

- Single Lever Faucet w/Spray-Chrome
- F/S Gas Range 30"
- 18.1 CF Refrigerator
- Stainless Steel 6" Deep Sink

## INTERIOR

- Knockdown Ceiling
- Closet-White Vinyl
- Mini Blinds T/O 1" Aluminum
- Rebond Carpet Pad
- Small Door Casing
- Tape & Texture - Wet Areas
- Tape & Texture- Living Areas
- Square Interior Corners - T/O

## Master Bath

- 1-pc 60" Fiberglass Tub/Shower
- Single Lever Faucet/ Diverter-Chrome
- Towel Bar/Tissue Holder-Chrome
- Porcelain Single Lavy Bowl
- Exhaust Fan w/Switch
- Mirror with polished edge
- Hollywood Bar Light
- 36' High Vanity

## Guest Bath

- 1-pc Fiberglass Tub/Shower
- Single Lever Faucet/ Diverter-Chrome
- Porcelain Lavy Bowl
- Exhaust Fan
- Mirror w/ Polished edge
- Hollywood Bar Light

## Doors & Windows

- 36" 6-Panel Fiberglass Entry Door
- 36" 6-Panel Fiberglass Rear Door
- Low- E Vinyl
- D/G Tempered Glass Windows T/O
- (2) Mortised Door Hinges-Nickel
- Tulip Interior Door Knobs - Nickel

## Exterior

- Insulation:r21-11-11 (228-11-11 Model Specific)
- Exterior Window Trim T/O
- Allura-Fiber Cement
- Exterior Vertical Siding
- Roof Pitch:3:12 / 4:12 for all single Wides
- 12" Front Overhang
- Roof Load 20 LB

### Eaves & Overhangs

- 12',14',& 15' Wide  
-Optional 4",6" or 12" Side Eaves  
-Optional 12" Rear Overhang
- 20' & 24' Wide  
Optional 6" or 12" Side Eaves  
Optional 12" rear Overhang
- 28' Wide  
-Standard 6" Side Eaves  
-Optional 12" Side Eaves  
Optional 12" Rear Overhang
- 30' Wide  
-Nominal 4"Side Eaves-STD  
- Optional 12" Rear Overhang

US Modular // HUD Specifications  
CA HCD Dealer License #DL1241679  
CA General Contractors License #943047

