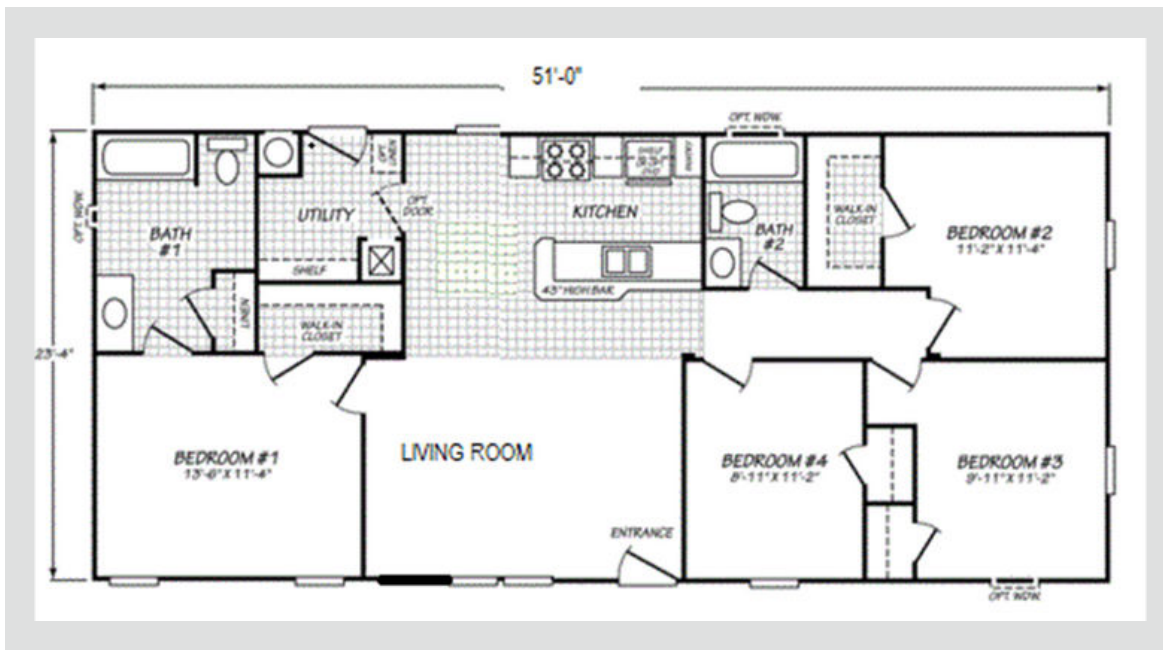


Colonial Series



Charleston

4 Bed 2 Bath

1199 Sqft

23'4" x 51'



Colonial Series Specifications

Electrical/Plumbing

- 100 Amp Service
- Rocker Switches Throughout
- Dual USB Recept-Kitchen
- Interior Panel Box
- Furnace:56 BTU
- 29 Gal Gas Water Heater
- Shut-Off Valves Throuout
- Plumb & Wlre for washer & gas dryer

Canyon Lake Lighting PKG

- 1-LT Domed Chandelier-Qty. 1
- Exterior Light - Qty. 2
- (5) 6' Ceiling Light (Brushed Nickel)
- Kitchen (2), Hallway(1), Master Bath (1), Guest Bath (1)

Cabinetry

- 4" Laminate B/Splash- Master Bath
- 4" Laminate B/Splash- Guest Bath
- 4" Laminate B/ Splash- Kitchen
- Kitchen 3-Door Pantry (Model Specific)
- Cabinet Doors: Shaker (paper Wrap)
- Drawer Bank (3 Drawers)-Kitchen'
12" Shelf Over Refer
- Cabinet Hardwar- Nickel Round Knobs
- Side-Mount Drawer Guides
- Concealed Cabinet Door Hinges
- White-Lined Overhead Cabinets
- White Lined Base Cabinets
- Wire Utility Shelf

Kitchen

- Single Lever Faucet w/Spray-Chrome
- F/S Gas Range 30"
- 18.1 CF Refrigerator
- Stainless Steel 6" Deep Sink

INTERIOR

- Knockdown Ceiling
- Closet-White Vinyl
- Mini Blinds T/O 1" Aluminum
- Rebond Carpet Pad
- Small Door Casing
- Tape & Texture - Wet Areas
- Tape & Texture- Living Areas
- Square Interior Corners - T/O

Master Bath

- 1-pc 60" Fiberglass Tub/Shower
- Single Lever Faucet/ Diverter-Chrome
- Towel Bar/Tissue Holder-Chrome
- Porcelain Single Lavy Bowl
- Exhaust Fan w/Switch
- Mirror with polished edge
- Hollywood Bar Light
- 36' High Vanity

Guest Bath

- 1-pc Fiberglass Tub/Shower
- Single Lever Faucet/ Diverter-Chrome
- Porcelain Lavy Bowl
- Exhaust Fan
- Mirror w/ Polished edge
- Hollywood Bar Light

Doors & Windows

- 36" 6-Panel Fiberglass Entry Door
- 36" 6-Panel Fiberglass Rear Door
- Low- E Vinyl
- D/G Tempered Glass Windows T/O
- (2) Mortised Door Hinges-Nickel
- Tulip Interior Door Knobs - Nickel

Exterior

- Insulation:r21-11-11 (228-11-11 Model Specific)
- Exterior Window Trim T/O
- Allura-Fiber Cement
- Exterior Vertical Siding
- Roof Pitch:3:12 / 4:12 for all single Wides
- 12" Front Overhang
- Roof Load 20 LB

Eaves & Overhangs

- 12',14',& 15' Wide
-Optional 4",6" or 12" Side Eaves
-Optional 12" Rear Overhang
- 20' & 24' Wide
Optional 6" or 12" Side Eaves
Optional 12" rear Overhang
- 28' Wide
-Standard 6" Side Eaves
-Optional 12" Side Eaves
Optional 12" Rear Overhang
- 30' Wide
-Nominal 4"Side Eaves-STD
- Optional 12" Rear Overhang

US Modular // HUD Specifications
CA HCD Dealer License #DL1241679
CA General Contractors License #943047

