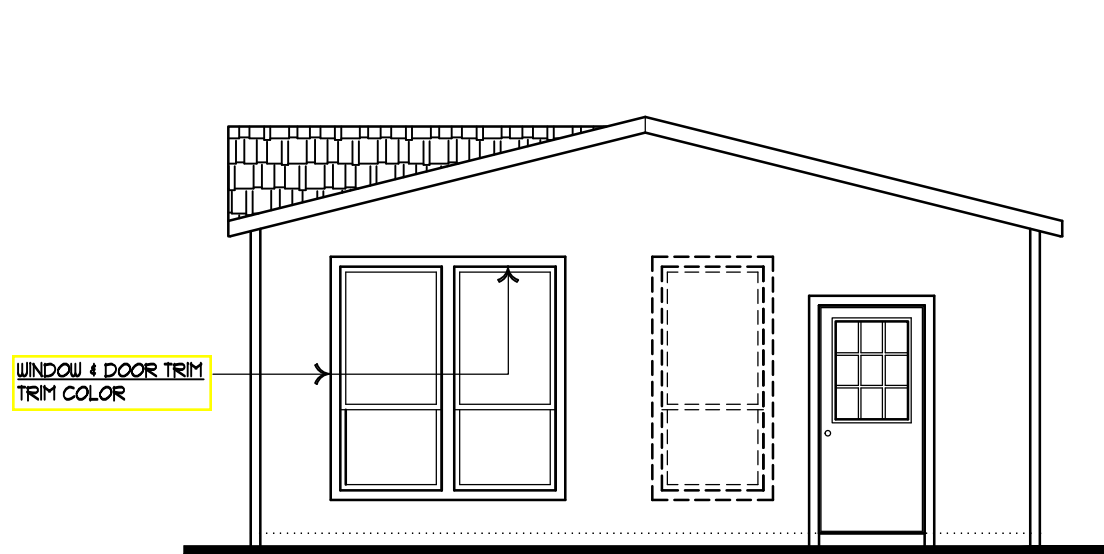


**Harmony**  
**HRM-2440-2A and HRR-2440-2A**  
 2 Bedroom, 2 Bath - 946 Sq. Ft.

**Electric**  
 Print Date: 09-14-23



STANDARD FRONT ENDWALL

WINDOW & DOOR TRIM  
TRIM COLOR

SHIP-LOOSE  
PLANT-ON HOOD  
SEE HARMONY DETAILS  
WOOD - WHITE COLOR

PROVIDE BACKING IN  
DORMER WALL FOR TRELLIS  
ATTACHMENT BLOCKS.  
SEE SHT 2-A.1

TRELLIS  
SEE HARMONY DETAILS  
TRIM COLOR

FASCIA  
TRIM COLOR

8" x 3 1/2" COLUMN  
SEE HARMONY DETAILS  
TRIM COLOR

VERTICAL SIDING  
BODY COLOR

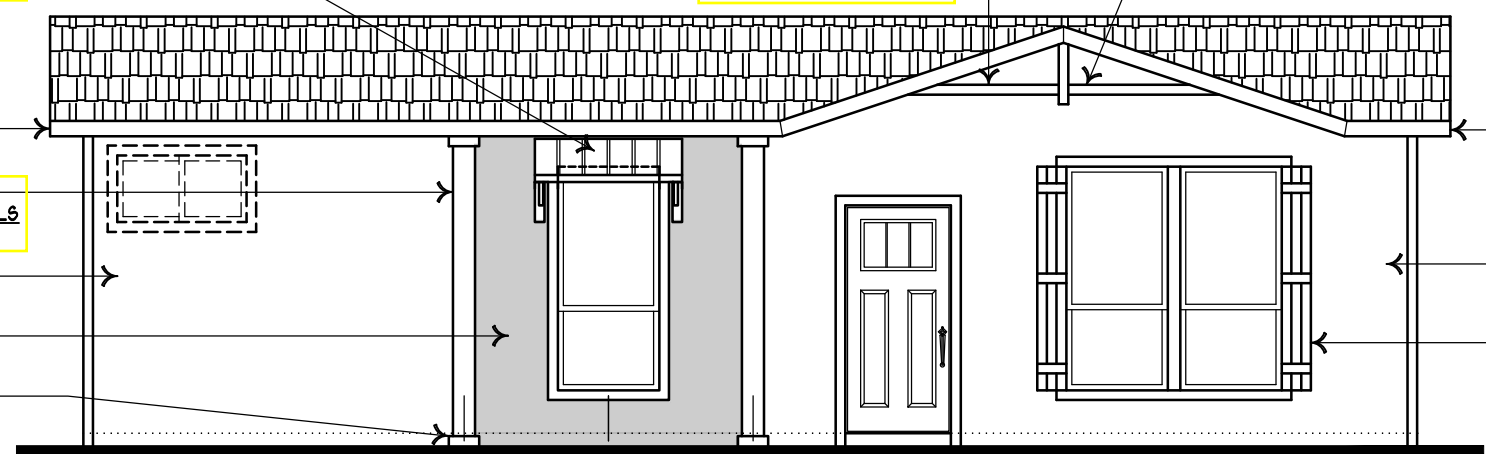
VERTICAL SIDING  
ACCENT COLOR

4" WRAP AT  
TOP & BOTTOM  
TRIM COLOR

FASCIA  
TRIM COLOR

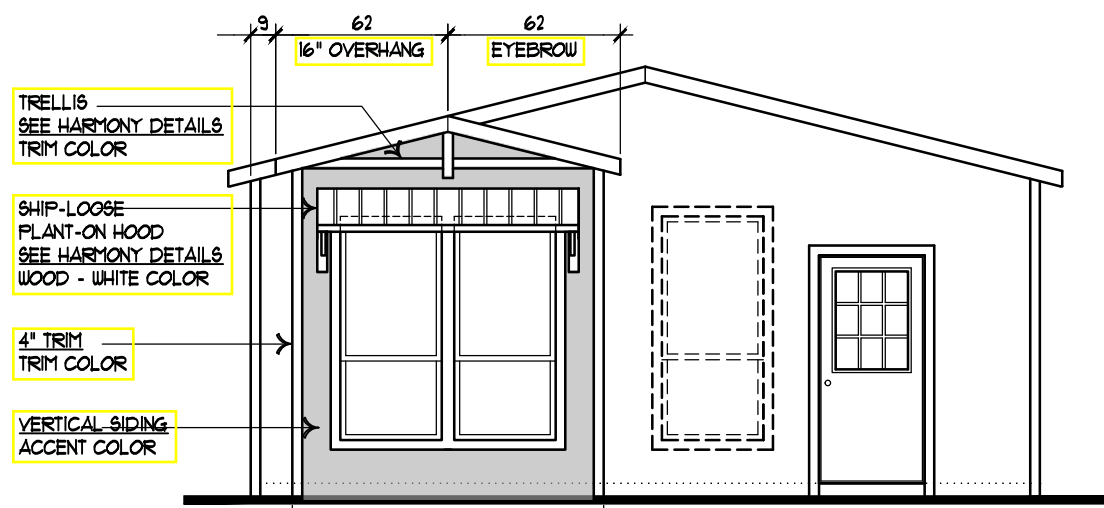
VERTICAL SIDING  
BODY COLOR

SHUTTERS  
SEE HARMONY DETAILS  
TRIM COLOR



STANDARD FRONT SIDEWALL

52 52



OPTION PARK FRONT ENDWALL

TRELLIS  
SEE HARMONY DETAILS  
TRIM COLOR

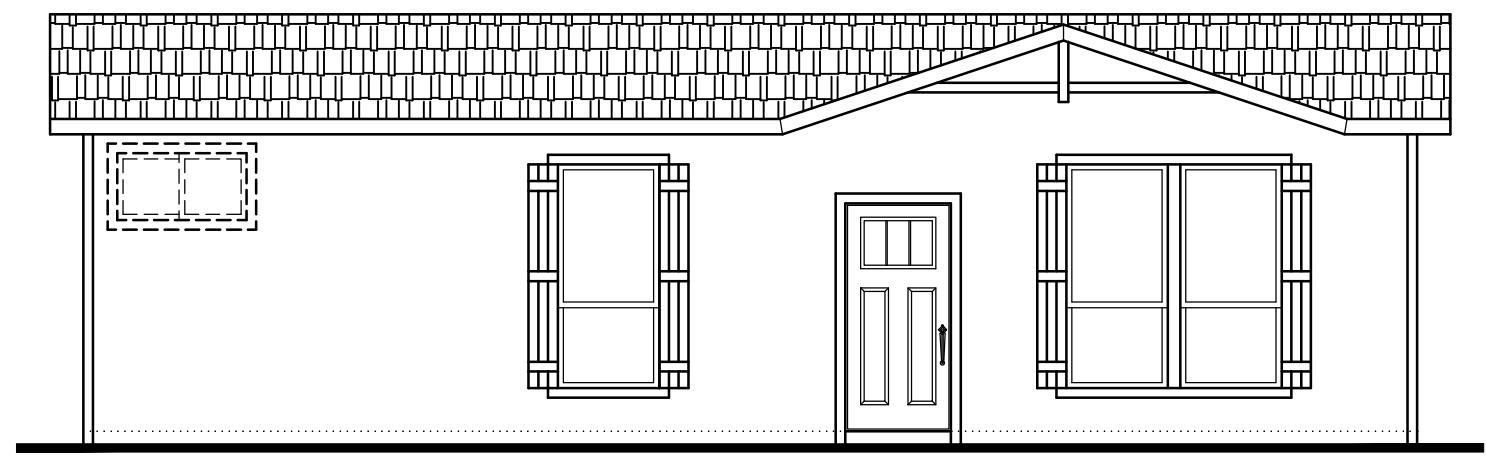
SHIP-LOOSE  
PLANT-ON HOOD  
SEE HARMONY DETAILS  
WOOD - WHITE COLOR

4" TRIM  
TRIM COLOR

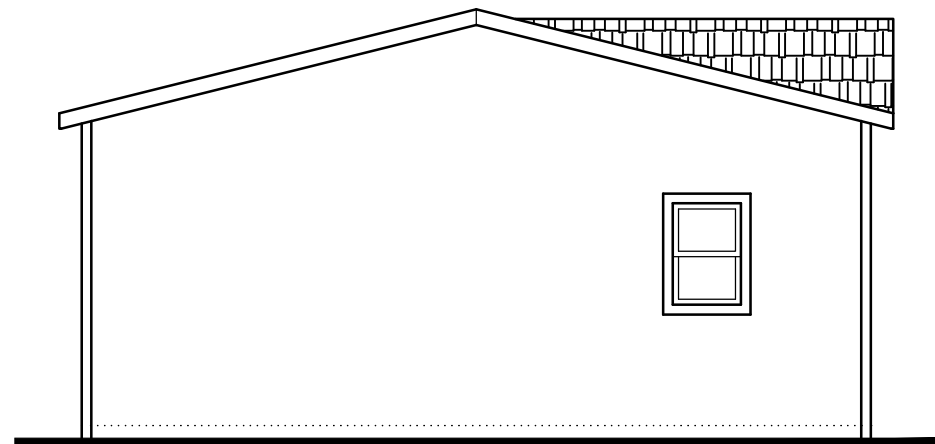
VERTICAL SIDING  
ACCENT COLOR

9 62 62  
16" OVERHANG EYEBROW

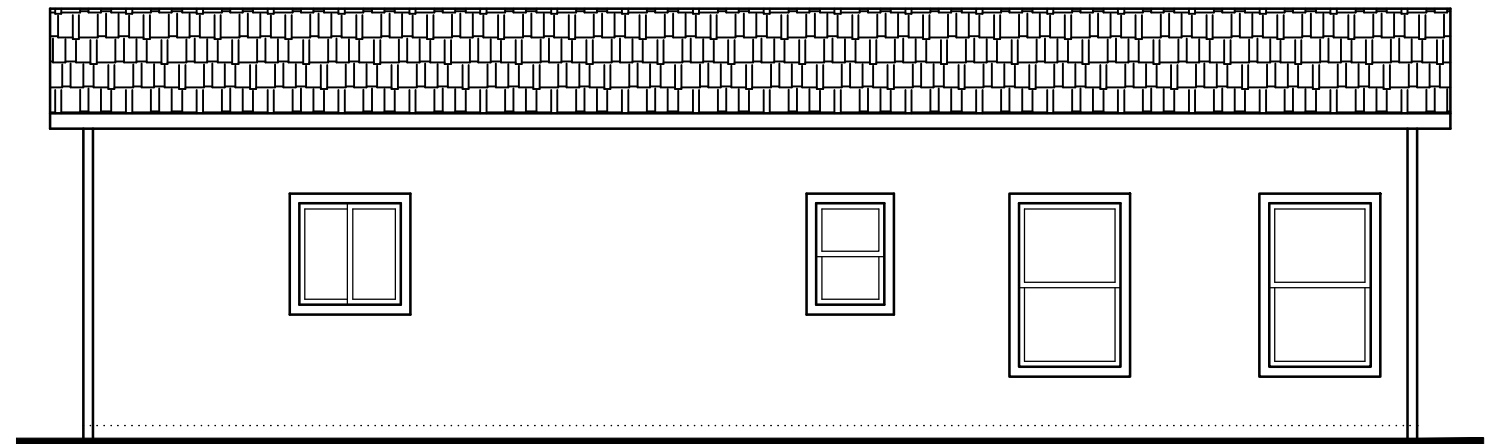
9'-4"



OPTION PARK FRONT SIDEWALL



REAR ENDWALL



REAR SIDEWALL

ALL HARMONY DETAILS  
ON SHEET 2-A.1

4" FLAT WINDOW AND DOOR  
TRIM THROUGHOUT.

# Harmony Standard Specifications

July 2023

- 9' Flat Ceilings  
*Featuring 80" Windows Per Plan*
- LED Recessed Can Lights Throughout
- Ceiling Fan Prep in Living Areas & Bedrooms
- Upgraded Shaw® Carpet
- Kwikset® Door Hardware Throughout  
*Featuring Thumbatch Front Door*
- Frigidaire® Black Stainless Steel Appliance Package
- Hardwood Cabinets & Frames  
*Featuring 42" Overheads & Drawer over Door Construction*
- Full Tile Kitchen Backsplash  
(Six3 Tile at Buckeye, AZ HBF)  
(Ceramic Tile at Perris, CA HBF)
- Farmhouse Stainless Steel Kitchen Sink
- Pfister® Faucets Throughout  
*Featuring Chrome Spring Load Pull Down Kitchen & Matte Black Exclusive in Baths*
- Quartz Island Countertop  
(Optional throughout at Perris, CA HBF only)
- Decorative Farmhouse Pendant Lighting Over Island
- Upgraded Primary Bath with Solid Surface Shower  
*Featuring Glass Shower Barn Door*
- Featuring unique exteriors per plan
- Craftsman Style Front Door
- 9-Lite Rear Door
- Ring® Video Doorbell
- 2x6 Exterior Walls & R-19 Insulation
- Architectural 3 Tab Shingles – 2 colors
- 30 LB Roof Load (Option 40 & 60 lb)
- eBuilt™ Zero Energy Ready Homes™ (R-27 floor, R-21 wall, R38 roof)  
(Non eBuilt Homes may lower values)
- Carrier® Smart Comfort Furnace System
- ecobee® Smart Thermostat