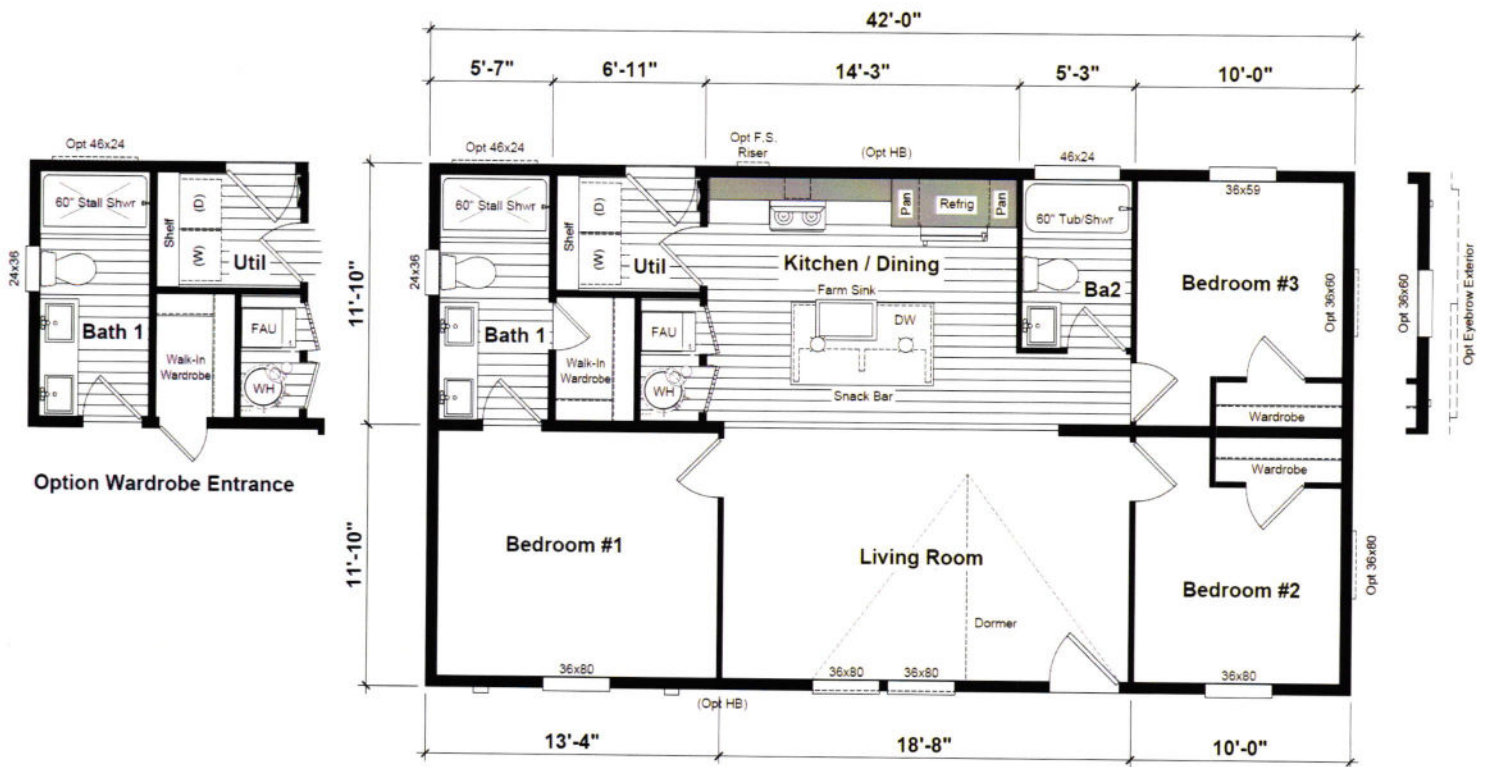


# HARMONY

## Motley

HR-2442-3A | 994 Sq Ft | 3 Bed | 2 Bath



Option Wardrobe Entrance

eBuilt Ask me about Zero Energy Ready™ Homes



Scan to learn more about eBuilt™

Contact your local Harmony retailer:

The home series, floor plans, photos, renderings, specifications, features, pricing, materials and availability shown will vary by retailer and state, and are subject to change without notice.

7|01|23



www.claytonwestharmony.com

# Harmony Standard Specifications

July 2023

- 9' Flat Ceilings  
*Featuring 80" Windows Per Plan*
- LED Recessed Can Lights Throughout
- Ceiling Fan Prep in Living Areas & Bedrooms
- Upgraded Shaw<sup>®</sup> Carpet
- Kwikset<sup>®</sup> Door Hardware Throughout  
*Featuring Thumbatch Front Door*
- Frigidaire<sup>®</sup> Black Stainless Steel Appliance Package
- Hardwood Cabinets & Frames  
*Featuring 42" Overheads & Drawer over Door Construction*
- Full Tile Kitchen Backsplash  
(Six3 Tile at Buckeye, AZ HBF)  
(Ceramic Tile at Perris, CA HBF)
- Farmhouse Stainless Steel Kitchen Sink
- Pfister<sup>®</sup> Faucets Throughout  
*Featuring Chrome Spring Load Pull Down Kitchen & Matte Black Exclusive in Baths*
- Quartz Island Countertop  
(Optional throughout at Perris, CA HBF only)
- Decorative Farmhouse Pendant Lighting Over Island
- Upgraded Primary Bath with Solid Surface Shower  
*Featuring Glass Shower Barn Door*
- Featuring unique exteriors per plan
- Craftsman Style Front Door
- 9-Lite Rear Door
- Ring<sup>®</sup> Video Doorbell
- 2x6 Exterior Walls & R-19 Insulation
- Architectural 3 Tab Shingles – 2 colors
- 30 LB Roof Load (Option 40 & 60 lb)
- eBuilt<sup>™</sup> Zero Energy Ready Homes<sup>™</sup> (R-27 floor, R-21 wall, R38 roof)  
(Non eBuilt Homes may lower values)
- Carrier<sup>®</sup> Smart Comfort Furnace System
- ecobee<sup>®</sup> Smart Thermostat