

Tempo



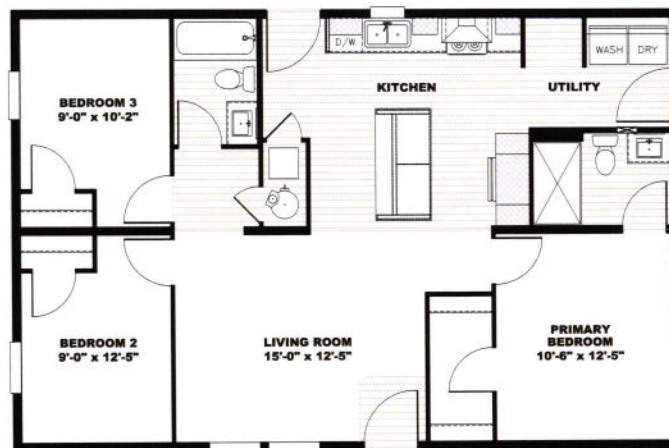
Sweet Dreams

TEM28403AH22 | 3 beds | 2 baths | 1,053 sq. ft.



View This Plan Online

🎵 Alternate Layout: Window IPO End Wall Door



- Full Drywall Throughout
- DuraCraft® Cabinets
- Frigidaire® Stainless Steel Appliance Package
- Craftsman Style Front Door
- Ecobee® Smart Thermostat
- Carrier® Furnace

eBuilt. Ask me about Zero Energy Ready™ Homes

Contact your local Tempo retailer:

The home series, floor plans, photos, renderings, specifications, features, pricing, materials and availability shown will vary by retailer and state, and are subject to change without notice.



Tempo Specs

Revised Standard Features, July 2023

- 8' Flat Ceilings
- Tape & Texture Throughout
- 2"x4" or 2"x6" Walls Per Zone
- DuraCraft® Cabinets
Feat. 42" Overheads
- LED Recessed Can Lights Throughout
- Ceiling Fan Prep in Living Room and Master Bedroom
- Fiberglass Tubs and Showers
- Frigidaire® Stainless Steel Appliance Package
Feat. 18' Top Freezer
- Pfister® Faucets Throughout
Feat. Brushed Nickel Pull Down In Kitchen
- 36" Stainless Steel European Range Hood
- Congoleum® Lux Linoleum
- Kwikset® Door Hardware Throughout
Feat. Thumblatch Front Door
- Craftsman Style Front Door, 9 Lite Rear Door
- 30 yr Architectural Shingles
- Awning Ready Option for Communities
- eBuilt - Zero Energy Ready Homes
Zone 2 (R-22 Floor, R-15 Wall, R-33 Roof)
Zone 3 (R-27 Floor, R-21 Wall, R-38 Roof)
- WUI (CA Wildfire) Option
- Garbage Disposal Option
- ecobee® Smart Thermostat
- Carrier® Furnace
- 2" Pre-Installed Window Blinds
- 2"x6" Wall - Climate Package Option
- Upgrade Roof Load Options



The home series and floor plans indicated will vary by retailer and state. Your local Home Center can quote you on specific prices and terms of purchase for specific homes. Clayton West invests in continuous product and process improvement. All home series, floor plans, specifications, dimension, features, materials, availability, and starting prices shown on this website are artist's renderings or estimates, and are subject to change without notice. Dimensions are nominal and length and width measurements are from exterior wall to exterior wall.

