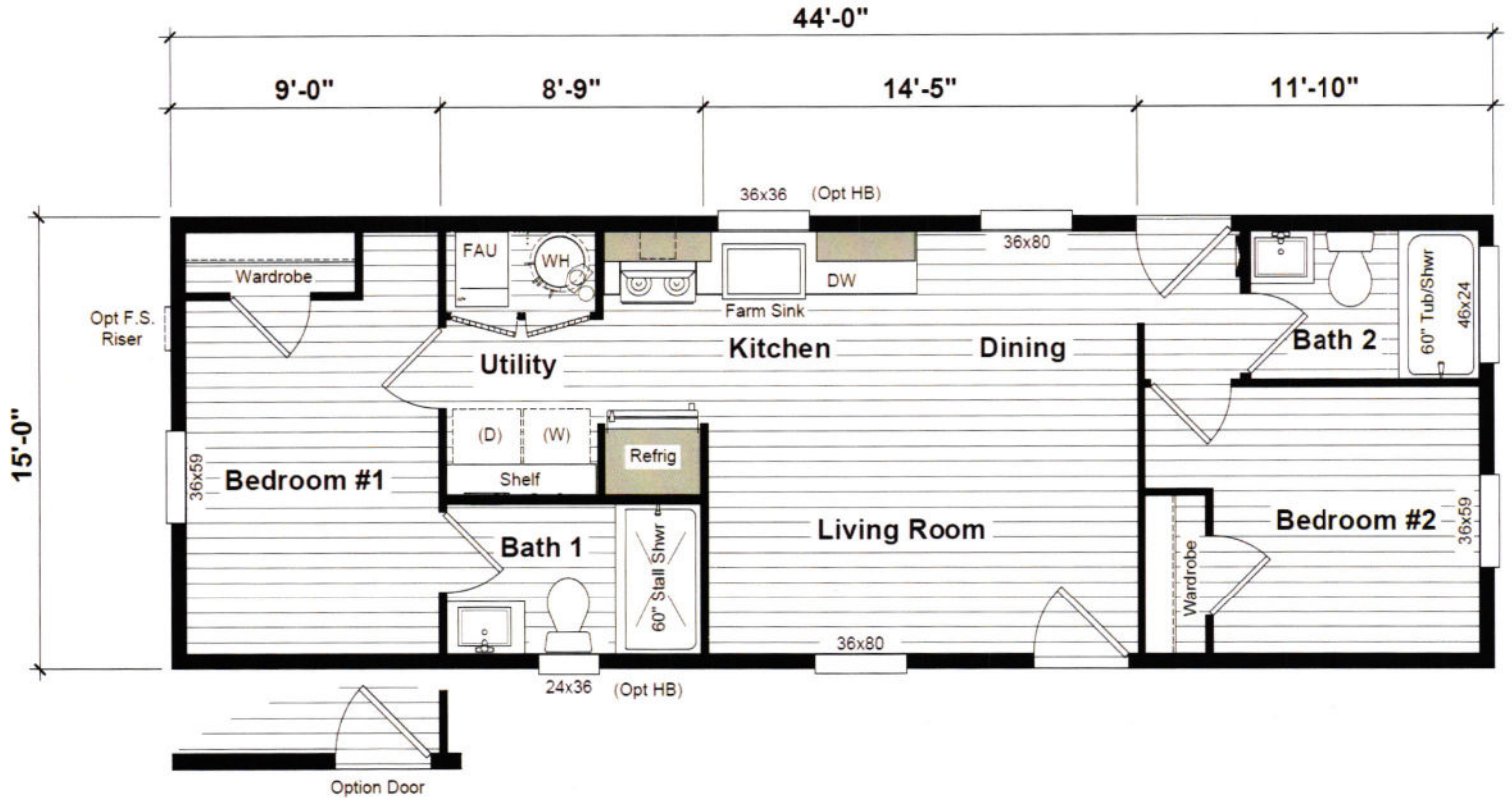


HARMONY

Wham

HR-1644-2A | 600 Sq Ft | 2 Bed | 2 Bath



eBuilt Ask me about Zero Energy Ready™ Homes



Scan to learn more about eBuilt™

Contact your local Harmony retailer:

The home series, floor plans, photos, renderings, specifications, features, pricing, materials and availability shown will vary by retailer and state, and are subject to change without notice.

7|01|23

Clayton
perris

Clayton
Built

www.claytonwestharmony.com

Harmony Standard Specifications

July 2023

- 9' Flat Ceilings
Featuring 80" Windows Per Plan
- LED Recessed Can Lights Throughout
- Ceiling Fan Prep in Living Areas & Bedrooms
- Upgraded Shaw® Carpet
- Kwikset® Door Hardware Throughout
Featuring Thumbatch Front Door
- Frigidaire® Black Stainless Steel Appliance Package
- Hardwood Cabinets & Frames
Featuring 42" Overheads & Drawer over Door Construction
- Full Tile Kitchen Backsplash
(Six3 Tile at Buckeye, AZ HBF)
(Ceramic Tile at Perris, CA HBF)
- Farmhouse Stainless Steel Kitchen Sink
- Pfister® Faucets Throughout
Featuring Chrome Spring Load Pull Down Kitchen & Matte Black Exclusive in Baths
- Quartz Island Countertop
(Optional throughout at Perris, CA HBF only)
- Decorative Farmhouse Pendant Lighting Over Island
- Upgraded Primary Bath with Solid Surface Shower
Featuring Glass Shower Barn Door
- Featuring unique exteriors per plan
- Craftsman Style Front Door
- 9-Lite Rear Door
- Ring® Video Doorbell
- 2x6 Exterior Walls & R-19 Insulation
- Architectural 3 Tab Shingles – 2 colors
- 30 LB Roof Load (Option 40 & 60 lb)
- eBuilt™ Zero Energy Ready Homes™ (R-27 floor, R-21 wall, R38 roof)
(Non eBuilt Homes may lower values)
- Carrier® Smart Comfort Furnace System
- ecobee® Smart Thermostat